

Now no one can Steal your Efforts



**Tsafe 2**

**Solution for File Security**

**How to Use TSafe2 File Security Solution to Terminal Login using PuTTY and PuTTY Private Key (PPK) File**

# Contact

Developed and Marketed By

## **Innovative Matrix Softech Pvt. Ltd.**

**Email:** [support@isohelpline.com](mailto:support@isohelpline.com)

**Web:** [www.SoftwareFileProtection.com](http://www.SoftwareFileProtection.com)

**Add:** [7013, 7th Floor, Emerald House,  
Sarojini Devi Road, Next to Parklane Hotel, Near State bank of Mysore, Paradise Circle,  
Hyderabad / Secunderabad- 500 003 India](#)

# Contents

|  |    |
|--|----|
| Contact.....                               | 2  |
| Contents.....                              | 3  |
| License Agreement.....                     | 4  |
| T-Safe 2.0 file Protection for PuTTY ..... | 7  |
| Problems in Installation? .....            | 15 |

# Tsafe 2

## License Agreement

---

**Note: You cannot share the product referred herein. You cannot sale or resale the product referred herein.**

**IMPORTANT** - READ CAREFULLY BEFORE DOWNLOADING, INSTALLING OR COPYING TO YOUR COMPUTER ANY FILE(S) CONTAINED HEREWITH.

THE FILE(S) AND OTHER INFORMATION PROVIDED HEREWITH ARE COPYRIGHTED. BY DOWNLOADING ANY FILE PROVIDED HEREWITH TO YOUR COMPUTER, YOU ARE ACCEPTING AND AGREEING TO THE TERMS OF THIS LICENSE AGREEMENT. IF YOU ARE NOT WILLING TO BE BOUND BY THE TERMS OF THIS LICENSE AGREEMENT, PRIOR TO DOWNLOADING OR COPYING ANY FILE(S) TO YOUR COMPUTER, YOU MUST DECLINE ACCESS TO SUCH MATERIALS.

**1. GRANT OF LICENSE:** Subject to the provisions contained herein and to the payment of all applicable fees, the Innovative Matrix Softech Private Limited grants you a non-exclusive, non-transferable license to the materials contained herewith (the "Product"). Your licensed rights to the Product are limited to the following:

(a) This License Agreement does not convey to you an interest in or to the Product, but only a limited right of use revocable in accordance with the terms of this License Agreement.

(b) You may install one copy of the Product on, and permit access to it by, a single computer owned, leased or otherwise controlled by you. In the event that computer becomes dysfunctional, such that you are unable to access the Product, you may transfer the Product to another computer, provided that the Product is removed from the computer from which it is transferred and the use of the Product on the replacement computer otherwise complies with the terms of this Agreement. Neither concurrent use on two or more computers nor use in a local area network or other network is permitted. You shall not print, merge, adapt, translate, modify, rent, lease, sell, sublicense, assign or otherwise transfer any of the Product, or remove any proprietary notice or label appearing on any of the Product. You may copy the Product only for backup purposes.

(c) You acknowledge and agree that the Product is proprietary to the Copyright holder, INNOVATIVE MATRIX SOFTECH PRIVATE LIMITED, and is protected under Indian copyright law and international copyright treaties. You further acknowledge and agree that all rights, title and interest in and to the Product, including all intellectual property rights, are and shall remain with Innovative Matrix Softech Private Limited.

(d) You shall provide INNOVATIVE MATRIX SOFTECH PRIVATE LIMITED or any designee of INNOVATIVE MATRIX SOFTECH PRIVATE LIMITED with all information necessary to assure compliance with the terms of this Agreement. In the event you are not in compliance with the terms of this Agreement through the actions of unrelated third parties, you shall use your best efforts to cooperate with INNOVATIVE MATRIX SOFTECH PRIVATE LIMITED and any of its designees to assure compliance.

## **2. LIMITED WARRANTY:**

(a) INNOVATIVE MATRIX SOFTECH PRIVATE LIMITED warrants for your benefit alone that, unless disclosed in the Product to the contrary, INNOVATIVE MATRIX SOFTECH PRIVATE LIMITED can license the Product and all copyright and trademarks related thereto or therein.

(b) THE EXPRESS WARRANTIES SET FORTH IN THIS SECTION 2 CONSTITUTE THE ONLY WARRANTIES WITH RESPECT TO THE PRODUCT AND INNOVATIVE MATRIX SOFTECH PRIVATE LIMITED MAKES NO OTHER REPRESENTATION OR WARRANTY OR CONDITION OF ANY KIND, WHETHER EXPRESS OR IMPLIED (EITHER IN FACT OR BY OPERATION OF LAW) WITH RESPECT TO ANY OF THE PRODUCT, INCLUDING, WITHOUT LIMITATION, WITH RESPECT TO THE SUFFICIENCY, ACCURACY OR UTILIZATION OF, OR ANY INFORMATION OR OPINION CONTAINED OR REFLECTED IN, ANY OF THE PRODUCT. INNOVATIVE MATRIX SOFTECH PRIVATE LIMITED EXPRESSLY DISCLAIMS ALL WARRANTIES OR CONDITIONS OF MERCHANTABILITY OR FITNESS FOR A PARTICULAR PURPOSE. NO OFFICER, DIRECTOR, EMPLOYEE, MEMBER, AGENT, REPRESENTATIVE OR PUBLISHER OF THE COPYRIGHT HOLDER IS AUTHORIZED TO MAKE ANY MODIFICATION, EXTENSION, OR ADDITION TO THIS LIMITED WARRANTY.

**3. INDEMNIFICATION:** INNOVATIVE MATRIX SOFTECH PRIVATE LIMITED, any agent, representative, publisher or distributor of the Product, or any of their respective directors, officers, employees, agents, representatives or members (the "INNOVATIVE MATRIX SOFTECH PRIVATE LIMITED Indemnified Parties") shall have no liability for, and you shall defend, indemnify and hold each of the INNOVATIVE MATRIX SOFTECH PRIVATE LIMITED Indemnified Parties harmless from and against, any claim, loss, demand, liability, obligation and expenses (including reasonable attorneys' fees) based upon or arising out of any injury or damage, or any product liability claim, including but not limited to, any personal or bodily injury or property damage, arising out of, pertaining to, or resulting in any way from, the use or possession of any of the Product by you and/or any of your directors, officers, employees, representatives, agents or contractors.

## **4. LIMITATION OF LIABILITY:**

(a) You acknowledge that each of INNOVATIVE MATRIX SOFTECH PRIVATE LIMITED's obligations and liabilities with respect to the Product are exhaustively defined in this Agreement. You are responsible for the consequences of any use of any of the Product (whether or not such use was consistent with the license granted hereunder) created therefrom. Whether or not INNOVATIVE MATRIX SOFTECH PRIVATE LIMITED has been advised of their possibility, neither INNOVATIVE MATRIX SOFTECH PRIVATE LIMITED nor any of its representatives or agents, directors, officers, employees, or members, shall be liable, whether under contract, tort (including negligence) or otherwise, for any indirect, special, punitive, incidental or consequential loss, damage, cost or expense of any kind whatsoever and howsoever caused, that may be suffered by you or any of your directors, officers, employees, agents, representatives or contractors or any third party.

(b) If at any time an allegation of infringement of any rights of any third party is made, or in INNOVATIVE MATRIX SOFTECH PRIVATE LIMITED's opinion is likely to be made, with respect to any of the Product, INNOVATIVE MATRIX SOFTECH PRIVATE LIMITED may, at its option and at its own expense (i) obtain for you the right to continue using the Product, (ii) modify or replace the Product or any portion thereof so as to avoid any such claim of infringements, or (iii) refund to you the License Fee. INNOVATIVE MATRIX SOFTECH PRIVATE LIMITED shall have no liability to you if any claim of infringement would have been avoided except for your refusal to use any modified or replacement Product supplied or offered to be supplied pursuant to this Section 4(b) or to otherwise cease using the Product. Notwithstanding anything contained in this Agreement, and except as set forth in Section 4(b) hereof, INNOVATIVE MATRIX SOFTECH PRIVATE LIMITED's liability to you for damages pursuant to this Section 4(b), if any, shall not exceed the amounts of the License Fee paid by you for the Product subject to any such claim.

(c) Section 4(b) state the entire liability of INNOVATIVE MATRIX SOFTECH PRIVATE LIMITED with respect to the infringement or alleged infringement of any third party rights of any kind whatsoever by any of the Product.

**5. TERMINATION:** This Agreement may be terminated immediately by INNOVATIVE MATRIX SOFTECH PRIVATE LIMITED upon breach of any provision of this Agreement by you. Upon any termination of this Agreement, you shall immediately discontinue the use of the Product and shall within ten (10) days either return file(s) on diskette(s), if any,

to INNOVATIVE MATRIX SOFTECH PRIVATE LIMITED or certify in writing to INNOVATIVE MATRIX SOFTECH PRIVATE LIMITED that the Product has been deleted from your computer and is eliminated from your premises.

**6. GOVERNING LAW; ATTORNEY'S FEES:** This Agreement shall be governed by the laws of the Republic of India without reference to its conflict of laws and provisions and you further consent to jurisdiction by the state and federal courts sitting in the state of Andhra Pradesh, India.

**7. MISCELLANEOUS:** This Agreement constitutes the complete and exclusive agreement between INNOVATIVE MATRIX SOFTECH PRIVATE LIMITED and you with respect to the subject matter hereof, and supersedes all prior oral or written understandings, communications or agreements not specifically incorporated herein. This Agreement may not be modified except in writing duly signed by an authorized representative of INNOVATIVE MATRIX SOFTECH PRIVATE LIMITED and you. If any provision of this Agreement is held to be unenforceable for any reason, such provision shall be reformed only to the extent necessary to make it enforceable, and such decision shall not affect the enforceability (i) of such provision under other circumstances, or (ii) of the remaining provisions hereof under all circumstances. Headings shall not be considered in interpreting the Agreement.

**8. EXPORT:** You cannot load or export or re-export any of the Product or any underlying information or technology without prior consent from the Innovative Matrix Softech Private Limited. You may not load or export or re-export any of the Product or any underlying information or technology except in full compliance with all applicable laws of republic of India and other applicable laws and regulations.

9. By agreeing to this license agreement, you also agree to general terms and conditions given on our website [www.isohelpline.com](http://www.isohelpline.com) (either on home page or product related pages)

**BY ACCESSING THE PRODUCT, YOU ACKNOWLEDGE THAT YOU HAVE READ THE TERMS OF THIS LICENSE AGREEMENT AND AGREE TO BE BOUND BY ITS TERMS.**

# TSafe 2.0 File Protection for PuTTY

---

Using PuTTY and PuTTY Private Keys for server login are considered to be most secured way to log in to servers. They are but only to the extent of data transaction between your system and the cloud server.

But within your organization, if a unauthorized person gets hold of the PuTTY Private Key (.ppk) file he can misuse the same making the entire system more vulnerable.

Clouds like Amazon AWS, GitHUB, IBM allows PuTTY and **ppk** file to log in.

TSafe2 file Protection for PuTTY is designed especially to prevent unauthorized use of PuTTY private key files (.ppk files).

Here is a brief guide on how to use TSafe2 Putty file Protection Tool.

## Steps :

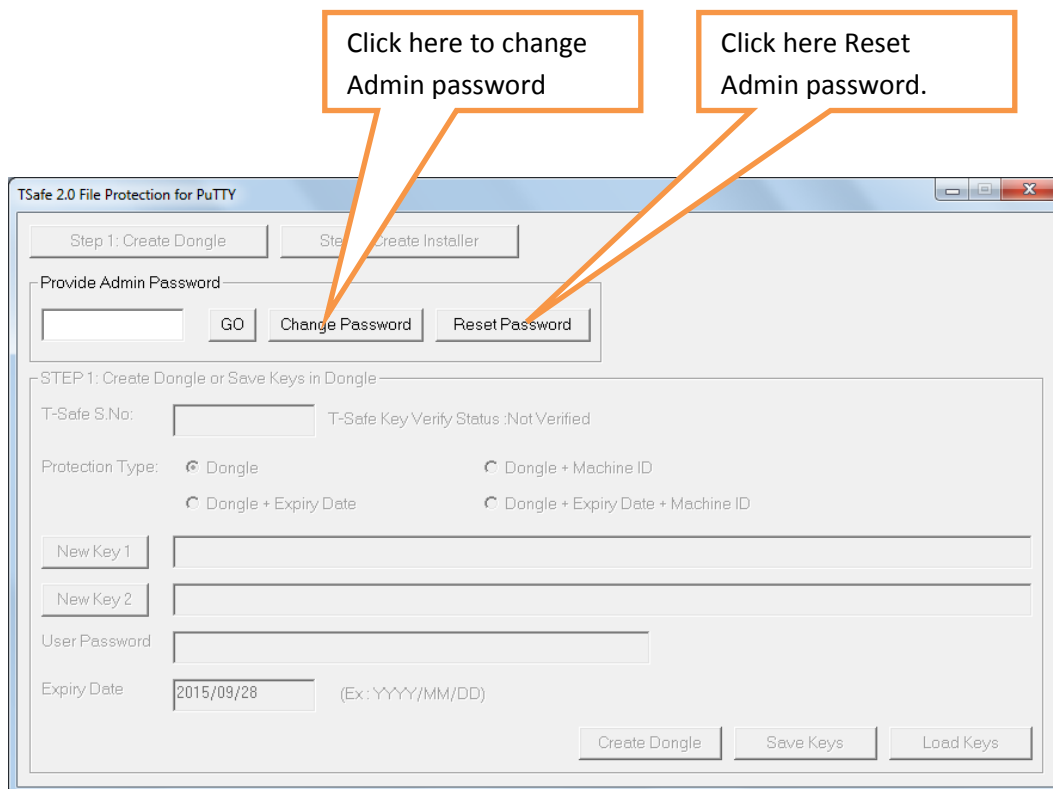
In just two steps, you can authorize persons to use Amazon cloud and protect the log in with USB Dongle.

1. Create Dongle.
2. Create Installer.

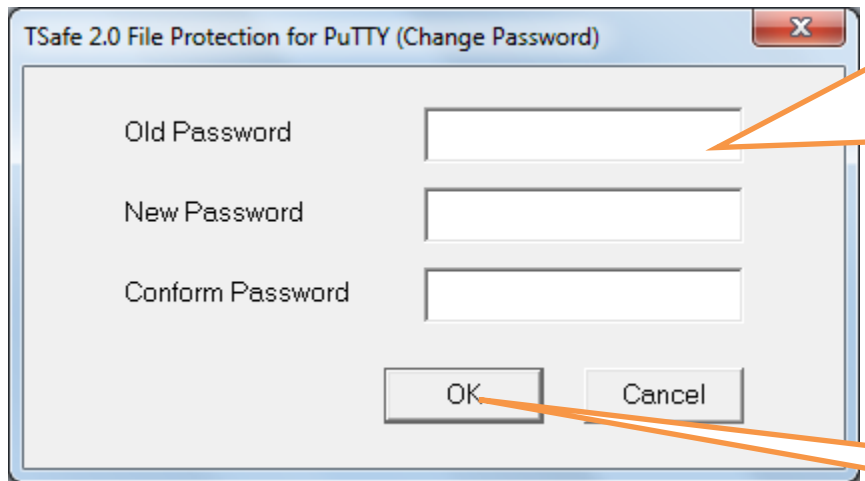
## STEP 1: Create Dongle

- Open T-Safe 2.0 File Protection for PuTTY from Program menu or desktop shortcut.

- Enter the Admin password of the dongle (Default: 123456) and press {ENTER} or click on {GO}.
- It is recommended that you change the Admin password by clicking on “Change Password”.
- You can also reset the Admin password in case you forget it, by clicking on “Reset Password”.
- You can reset only if you know the encryption keys saved inside and hence you must keep backup of the keys in “TSafe2 Key” file.
- Default Keys are randomly generated and stored in the dongles while manufacturing and hence first step should be to save keys and create the dongle with your own keys.

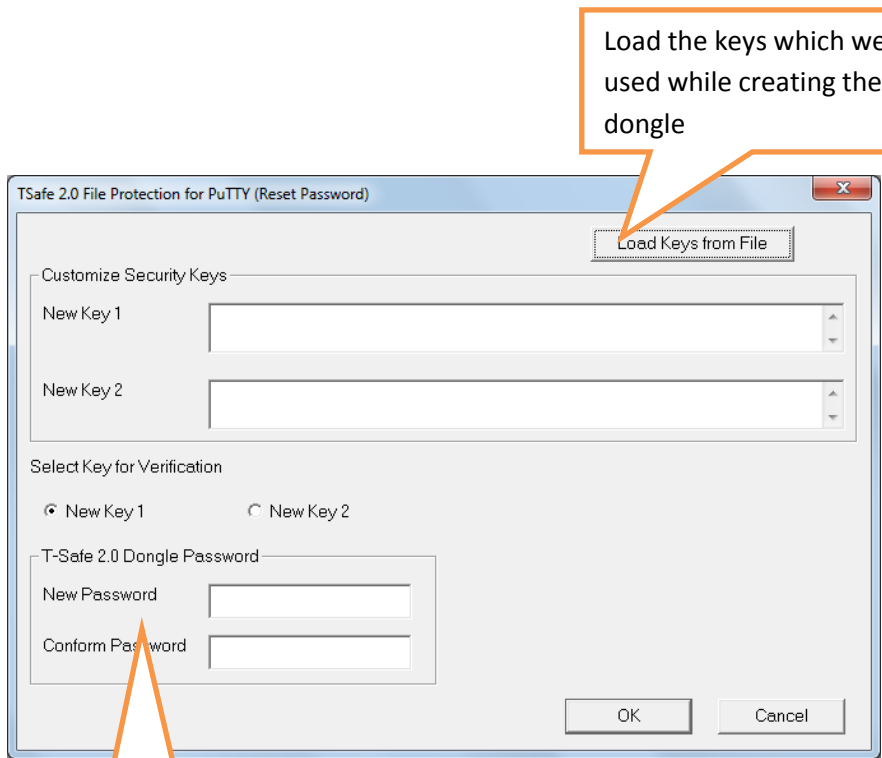






Enter old password as default password, "123456" if your changing the password for first time.

Enter the new password and click ok



Load the keys which were used while creating the dongle

Enter new password details and click "OK"

## Select the Protection Type

To create a dongle first you need to select the type of protection you want to give to your Putty files.

You can give four types of protection.

1. Dongle.
2. Dongle and Expiry Date.
3. Dongle and Machine ID.
4. Dongle and Machine ID plus Expiry Date.

You need to select any one of these options according to your requirement.

1. If you select your option as '**Dongle**' then your Putty files can be used anywhere but only with the dongle.
2. If you select your option as '**Dongle + Expiry**' then the user can use your Putty files anywhere with the dongle till the date of expiry.
3. If you select your option as '**Dongle + Machine ID**' then the user can use your Putty files only in the computer or machine in which the user puts the dongle for the first time, hence it becomes unusable for other computers.
4. If you select your option as '**Dongle + Machine ID + Expiry date**' then your Putty files can be used only in the computer in which the user puts the dongle for the first and only till the date of Expiry.
  - Encryption keys '**New Key 1**' and '**New key 2**' are generated automatically, you can change them by clicking on '**New Key 1**'

and **'New key 2'** you need to save these keys on your computer for future use.

- Give the "User password" for User, which by default is set as "123456".
- Give the Expiry date, allowed only if "**Expiry Date**" is selected in "Protection Type". Else this is disabled and shows today's date.
- Press {ENTER} or Click {**Create Dongle**}.

The screenshot shows the T-Safe 2.0 File Manager interface with the following callouts:

- 1.** Enter the Admin password and click "GO"
- 2.** Serial number of the dongle is displayed. Note if required.
- 3.** Select the protection type.
- 4.** Keys generated automatically, you can change them by clicking on New Key 1 and New Key 2, or you can load already saved keys, make sure that you save the keys for future use.
- 5.** User password by default is given as "123456", you can change it. Or User can also change it later.
- 6.** Click here to create dongle
- Click here **to save keys.**
- To use existing saved keys, click here **to load keys.**

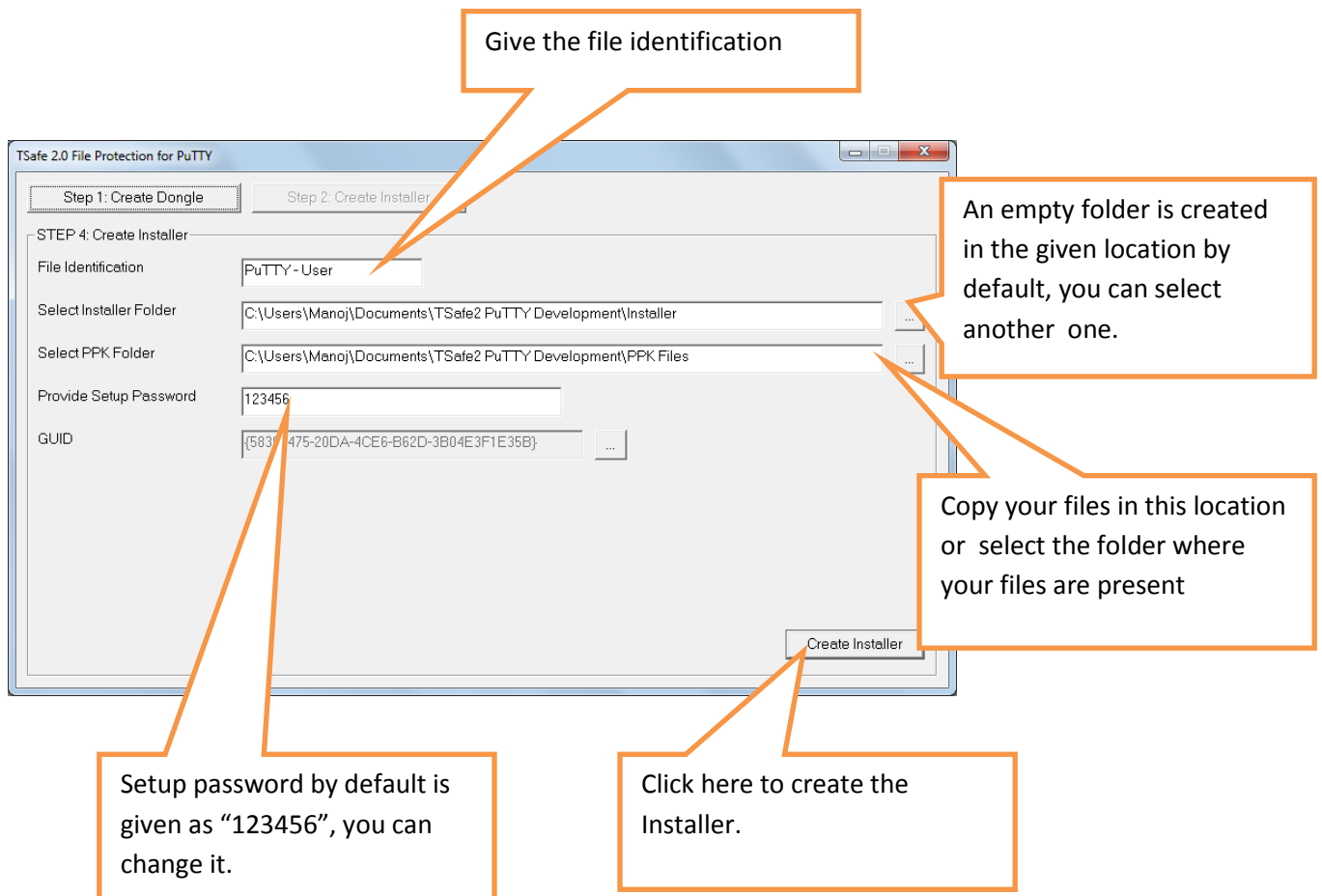
## Step 2 Create Installer

### General Instructions:

- This step will encrypt your PPK files and include them in a installer with PuTTY software.
- You only need to give installer with TSafe2 USB Dongle to the user.
- Installer will include dot Net frame work 4.0.3 which user can install from program menu if not installed already.
- Installer will be created at:  
**{Selected Folder}\Setup\\*.\***  
(Include all files )
- TSafe2 setup will create “TSafe2 PuTTY Development” folder in your “Documents” folder with two sub folders “PPK Files” and “Installer”.
- By default system will use these as default folders. You vcan select any folder of your choice.
- Before starting prepare a folder containing PPK files and a text file with instructions and details of HOST Name etc. (A sample is included in the PPK Files folder created by installer.

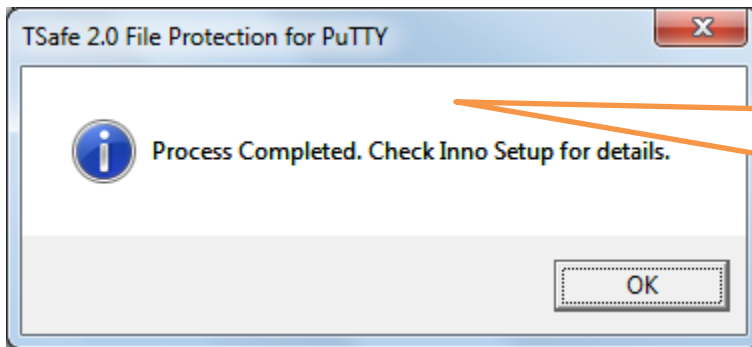
## Operating Instructions:

- Enter **“File identification”**,; This should be like **“PuTTY- {UserName}”**
- **Installer Folder** is given by default you can select another one, make sure that it is empty.
- **“PPK file folder”** is given by default you can select another folder in which your data to be encrypted is present or copy your files to the given default location.
- Now provide the setup password, which the user needs to enter while installation (Default is 123456).
- Press {ENTER} or click **“Create Installer”**.



- Installer uses **InnoSetup** for creating installer.
- Installation related errors will be displayed in the **InnoSetup**.
- **InnoSetup** will also display progress.
- For more customizations refer **InnoSetup** documentation online.

Wait for Completion Message:



**Success**

Installer may take some time. Wait for Success message.

## **Problems in Installation ?**

- If you face any problem in Installation, make sure that your internet connection is on because InnoSetup needs internet connection to download some files.
- Download InnoSetup Directly from <http://www.jrsoftware.org/isdl.php> choose {isetup-5.5.6.exe} or later as may be available and install.