

Now no one can Steal your Efforts



Tsafe

Quick Solution for File Security

How to Use T-Safe File Protection Solution

Contact

Developed and Marketed By

Innovative Matrix Softech Pvt. Ltd.

Email: support@isohelpline.com

Web: www.SoftwareFileProtection.com

Add: [7005, 7th Floor, Emerald House,
Sarojini Devi Road, Next to Parklane Hotel, Near State bank of Mysore, Paradise Circle,
Hyderabad / Secunderabad- 500 003 India](#)

Contents

- Contact 2
- Contents 3
- License Agreement..... 4
- T-Safe File Protection System 7
- T-Safe File Protection Tool 10
- Creating user dongle 25
- Updating expiry date..... 29
- Problems in Installation? 33

Tsafe

License Agreement

Note: You cannot share the product referred herein. You cannot sale or resale the product referred herein.

IMPORTANT - READ CAREFULLY BEFORE DOWNLOADING, INSTALLING OR COPYING TO YOUR COMPUTER ANY FILE(S) CONTAINED HEREWITH.

THE FILE(S) AND OTHER INFORMATION PROVIDED HEREWITH ARE COPYRIGHTED. BY DOWNLOADING ANY FILE PROVIDED HEREWITH TO YOUR COMPUTER, YOU ARE ACCEPTING AND AGREEING TO THE TERMS OF THIS LICENSE AGREEMENT. IF YOU ARE NOT WILLING TO BE BOUND BY THE TERMS OF THIS LICENSE AGREEMENT, PRIOR TO DOWNLOADING OR COPYING ANY FILE(S) TO YOUR COMPUTER, YOU MUST DECLINE ACCESS TO SUCH MATERIALS.

1. GRANT OF LICENSE: Subject to the provisions contained herein and to the payment of all applicable fees, the Innovative Matrix Softech Private Limited grants you a non-exclusive, non-transferable license to the materials contained herewith (the "Product"). Your licensed rights to the Product are limited to the following:

(a) This License Agreement does not convey to you an interest in or to the Product, but only a limited right of use revocable in accordance with the terms of this License Agreement.

(b) You may install one copy of the Product on, and permit access to it by, a single computer owned, leased or otherwise controlled by you. In the event that computer becomes dysfunctional, such that you are unable to access the Product, you may transfer the Product to another computer, provided that the Product is removed from the computer from which it is transferred and the use of the Product on the replacement computer otherwise complies with the terms of this Agreement. Neither concurrent use on two or more computers nor use in a local area network or other network is permitted. You shall not print, merge, adapt, translate, modify, rent, lease, sell, sublicense, assign or otherwise transfer any of the Product, or remove any proprietary notice or label appearing on any of the Product. You may copy the Product only for backup purposes.

(c) You acknowledge and agree that the Product is proprietary to the Copyright holder, INNOVATIVE MATRIX SOFTECH PRIVATE LIMITED, and is protected under Indian copyright law and international copyright treaties. You further acknowledge and agree that all rights, title and interest in and to the Product, including all intellectual property rights, are and shall remain with Innovative Matrix Softech Private Limited.

(d) You shall provide INNOVATIVE MATRIX SOFTECH PRIVATE LIMITED or any designee of INNOVATIVE MATRIX SOFTECH PRIVATE LIMITED with all information necessary to assure compliance with the terms of this Agreement. In the event you are not in compliance with the terms of this Agreement through the actions of unrelated third parties, you shall use your best efforts to cooperate with INNOVATIVE MATRIX SOFTECH PRIVATE LIMITED and any of its designees to assure compliance.

2. LIMITED WARRANTY:

(a) INNOVATIVE MATRIX SOFTECH PRIVATE LIMITED warrants for your benefit alone that, unless disclosed in the Product to the contrary, INNOVATIVE MATRIX SOFTECH PRIVATE LIMITED can license the Product and all copyright and trademarks related thereto or therein.

(b) THE EXPRESS WARRANTIES SET FORTH IN THIS SECTION 2 CONSTITUTE THE ONLY WARRANTIES WITH RESPECT TO THE PRODUCT AND INNOVATIVE MATRIX SOFTECH PRIVATE LIMITED MAKES NO OTHER REPRESENTATION OR WARRANTY OR CONDITION OF ANY KIND, WHETHER EXPRESS OR IMPLIED (EITHER IN FACT OR BY OPERATION OF LAW) WITH RESPECT TO ANY OF THE PRODUCT, INCLUDING, WITHOUT LIMITATION, WITH RESPECT TO THE SUFFICIENCY, ACCURACY OR UTILIZATION OF, OR ANY INFORMATION OR OPINION CONTAINED OR REFLECTED IN, ANY OF THE PRODUCT. INNOVATIVE MATRIX SOFTECH PRIVATE LIMITED EXPRESSLY DISCLAIMS ALL WARRANTIES OR CONDITIONS OF MERCHANTABILITY OR FITNESS FOR A PARTICULAR PURPOSE. NO OFFICER, DIRECTOR, EMPLOYEE, MEMBER, AGENT, REPRESENTATIVE OR PUBLISHER OF THE COPYRIGHT HOLDER IS AUTHORIZED TO MAKE ANY MODIFICATION, EXTENSION, OR ADDITION TO THIS LIMITED WARRANTY.

3. INDEMNIFICATION: INNOVATIVE MATRIX SOFTECH PRIVATE LIMITED, any agent, representative, publisher or distributor of the Product, or any of their respective directors, officers, employees, agents, representatives or members (the "INNOVATIVE MATRIX SOFTECH PRIVATE LIMITED Indemnified Parties") shall have no liability for, and you shall defend, indemnify and hold each of the INNOVATIVE MATRIX SOFTECH PRIVATE LIMITED Indemnified Parties harmless from and against, any claim, loss, demand, liability, obligation and expenses (including reasonable attorneys' fees) based upon or arising out of any injury or damage, or any product liability claim, including but not limited to, any personal or bodily injury or property damage, arising out of, pertaining to, or resulting in any way from, the use or possession of any of the Product by you and/or any of your directors, officers, employees, representatives, agents or contractors.

4. LIMITATION OF LIABILITY:

(a) You acknowledge that each of INNOVATIVE MATRIX SOFTECH PRIVATE LIMITED's obligations and liabilities with respect to the Product are exhaustively defined in this Agreement. You are responsible for the consequences of any use of any of the Product (whether or not such use was consistent with the license granted hereunder) created therefrom. Whether or not INNOVATIVE MATRIX SOFTECH PRIVATE LIMITED has been advised of their possibility, neither INNOVATIVE MATRIX SOFTECH PRIVATE LIMITED nor any of its representatives or agents, directors, officers, employees, or members, shall be liable, whether under contract, tort (including negligence) or otherwise, for any indirect, special, punitive, incidental or consequential loss, damage, cost or expense of any kind whatsoever and howsoever caused, that may be suffered by you or any of your directors, officers, employees, agents, representatives or contractors or any third party.

(b) If at any time an allegation of infringement of any rights of any third party is made, or in INNOVATIVE MATRIX SOFTECH PRIVATE LIMITED's opinion is likely to be made, with respect to any of the Product, INNOVATIVE MATRIX SOFTECH PRIVATE LIMITED may, at its option and at its own expense (i) obtain for you the right to continue using the Product, (ii) modify or replace the Product or any portion thereof so as to avoid any such claim of infringements, or (iii) refund to you the License Fee. INNOVATIVE MATRIX SOFTECH PRIVATE LIMITED shall have no liability to you if any claim of infringement would have been avoided except for your refusal to use any modified or replacement Product supplied or offered to be supplied pursuant to this Section 4(b) or to otherwise cease using the Product. Notwithstanding anything contained in this Agreement, and except as set forth in Section 4(b) hereof, INNOVATIVE MATRIX SOFTECH PRIVATE LIMITED's liability to you for damages pursuant to this Section 4(b), if any, shall not exceed the amounts of the License Fee paid by you for the Product subject to any such claim.

(c) Section 4(b) state the entire liability of INNOVATIVE MATRIX SOFTECH PRIVATE LIMITED with respect to the infringement or alleged infringement of any third party rights of any kind whatsoever by any of the Product.

5. TERMINATION: This Agreement may be terminated immediately by INNOVATIVE MATRIX SOFTECH PRIVATE LIMITED upon breach of any provision of this Agreement by you. Upon any termination of this Agreement, you shall immediately discontinue the use of the Product and shall within ten (10) days either return file(s) on diskette(s), if any,

to INNOVATIVE MATRIX SOFTECH PRIVATE LIMITED or certify in writing to INNOVATIVE MATRIX SOFTECH PRIVATE LIMITED that the Product has been deleted from your computer and is eliminated from your premises.

6. GOVERNING LAW; ATTORNEY'S FEES: This Agreement shall be governed by the laws of the Republic of India without reference to its conflict of laws and provisions and you further consent to jurisdiction by the state and federal courts sitting in the state of Andhra Pradesh, India.

7. MISCELLANEOUS: This Agreement constitutes the complete and exclusive agreement between INNOVATIVE MATRIX SOFTECH PRIVATE LIMITED and you with respect to the subject matter hereof, and supersedes all prior oral or written understandings, communications or agreements not specifically incorporated herein. This Agreement may not be modified except in writing duly signed by an authorized representative of INNOVATIVE MATRIX SOFTECH PRIVATE LIMITED and you. If any provision of this Agreement is held to be unenforceable for any reason, such provision shall be reformed only to the extent necessary to make it enforceable, and such decision shall not affect the enforceability (i) of such provision under other circumstances, or (ii) of the remaining provisions hereof under all circumstances. Headings shall not be considered in interpreting the Agreement.

8. EXPORT: You cannot load or export or re-export any of the Product or any underlying information or technology without prior consent from the Innovative Matrix Softech Private Limited. You may not load or export or re-export any of the Product or any underlying information or technology except in full compliance with all applicable laws of republic of India and other applicable laws and regulations.

9. By agreeing to this license agreement, you also agree to general terms and conditions given on our website www.isohelpline.com (either on home page or product related pages)

BY ACCESSING THE PRODUCT, YOU ACKNOWLEDGE THAT YOU HAVE READ THE TERMS OF THIS LICENSE AGREEMENT AND AGREE TO BE BOUND BY ITS TERMS.

T-Safe File Protection System

T-Safe File Protection provides security to your files, videos etc., from piracy and reverse engineering. Here is a brief guide on how to use T-Safe file protection tool.

How it works?

The T-Safe protection for files works on “on-the-fly” encryption and uses encryption driver which integrates with windows and ensures that files software program gets non-encrypted data when it tries to read/open an encrypted files. Similarly when the software program tries to write/save the data the data gets encrypted “on-the-fly” or in memory.

No temporary file is made during the process giving maximum possible security.

No changes are made in the structure or working of software program to ensure that we abide by the licensing terms of that software.

T-Safe file protection uses custom encryption, though for some selected file formats and software AES 256 encryption is also available.

Steps :

There are four steps in T-Safe file protection tool.

1. Create dongle.
2. Create custom library.
3. Encrypt files.
4. Create installer.

Protection Types:

To create a dongle first you need to select the type of protection you want to give to your software.

You can give your software four types of protection.

1. Dongle.
2. Dongle and Expiry Date.
3. Dongle and Machine ID.
4. Dongle and Machine ID plus Expiry Date.

You need to select any one of these options according to your requirement.

1. If you select your option as '**Dongle**' then your software can be used on any computer but only with the dongle.
2. If you select your option as '**Dongle + Expiry**' then the user can use your software on any computer with the dongle till the date of expiry.
3. If you select your option as '**Dongle + Machine ID**' then the user can use your software only in the computer or machine in which

the user puts the dongle for the first time, hence it becomes unusable for other computers.

4. If you select your option as '**Dongle + Machine ID + Expiry date**' then your software can be used only in the computer in which the user puts the dongle for the first and only till the date of Expiry.

Notes:

- Software will not work on the expiry date selected but will work till the date before.
- When you create Machine ID restricted dongle, the machine on which dongle is created is considered as VENDOR machine and software will always run on that machine. This is allowed to test encryption and re-check to resolve any end user issues.

After selecting the type of protection click on "**Verify T-Safe Key**"; it will show the serial number of your dongle.

Now generate the keys by clicking on '**New Key 1**' and '**New key 2**' you need to save these keys on your computer for future use.

Save these keys in a secure place because if anyone finds these keys he can easily pirate your software by creating duplicate dongles.

We can create two types of dongles **master dongle** and **user dongle**.
Dongles store encryption keys only.

Master Dongle:

It allows you to create protection and installer for your software. It can be used to modify cabinet file containing your software or can be used to extract the files from the cabinet.

Whenever you want to make changes like extending expiry date, you can do only by using this dongle.

This must be placed in safe place, when not in use.

User Dongle:

It is the dongle delivered to the end users or customers. The users will be able to run your software with this dongle.

Vendors must safeguard MASTER Dongles because it is possible to decrypt the encrypted files with MASTER Dongle.

Decryptor is not provided with standard installer but can be made available on request.

T-Safe File protection Tool.

STEP 1: Create Dongle

Creating a master dongle:

- Connect your dongle and verify the T-Safe key.
- After generating the keys press on **'Save Keys'** and after saving keys click on **'Create Master Dongle'** and your master dongle is ready.

Select Protection Type.

STEP 1: Create Dongle or Save Keys

Protection Type:

- Dongle
- Dongle + Machine ID
- Dongle + Expiry Date
- Dongle + Expiry Date + Machine ID

Verify T-Safe Key [] T-Safe Key Verify Status :Not Verified

New Key 1 []

New Key 2 []

Expiry Date 15/06/13 (Ex: YYYY/MM/DD) Keep Keys Loaded

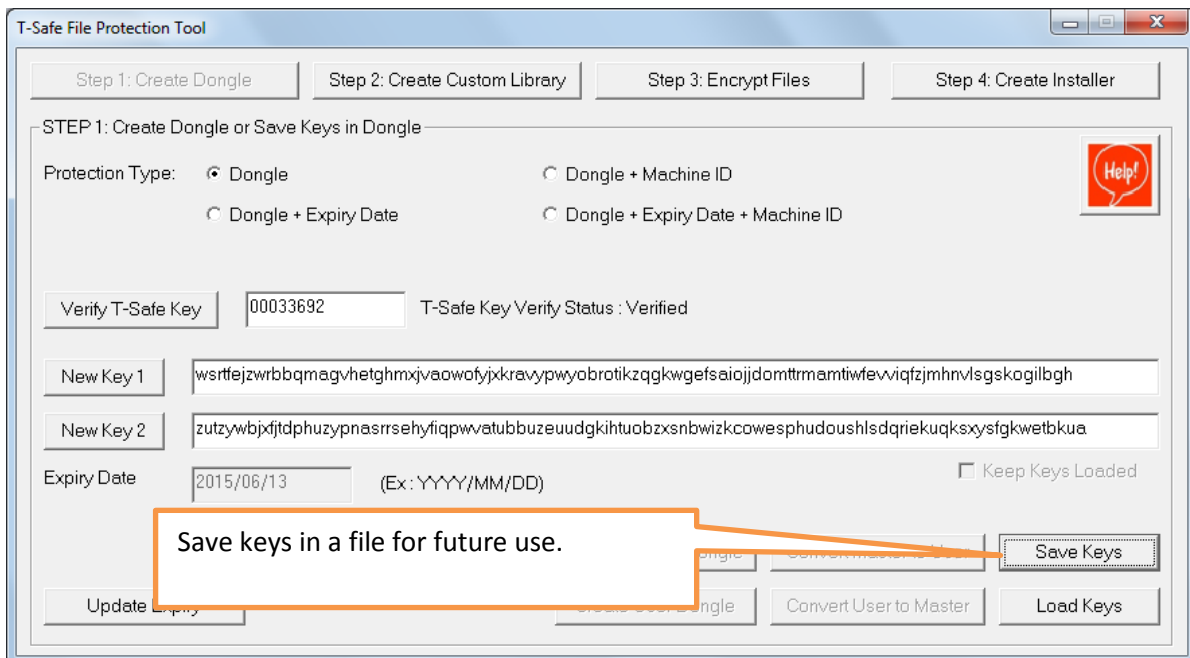
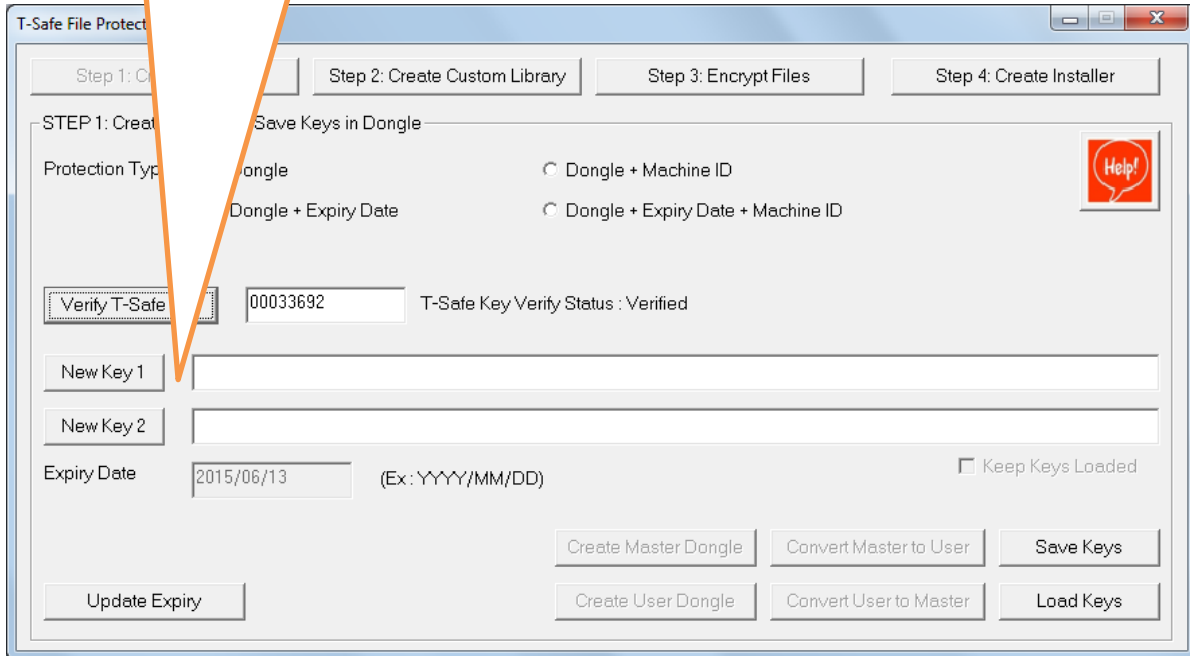
Update []

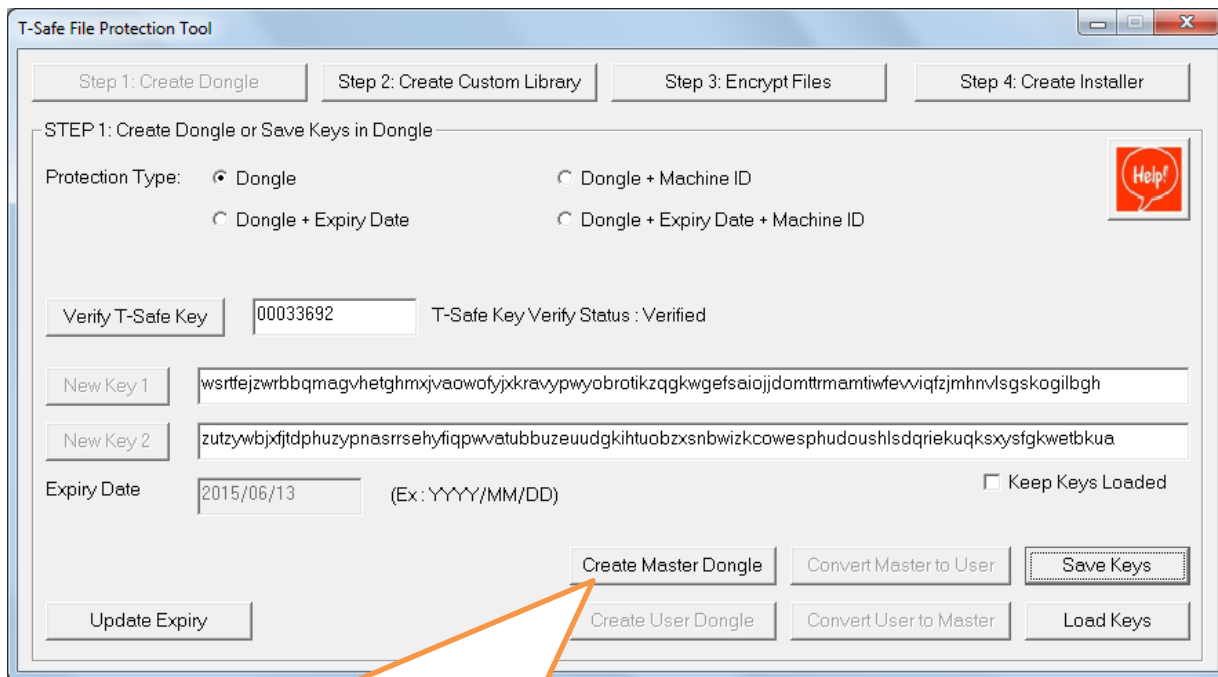
Create Master Dongle Convert Master to User Save Keys

Create User Dongle Convert User to Master Load Keys

Attach and Verify T-Safe Dongle

Generate Encryption Keys. And be sure to Save keys using "Save Keys" for future use.





Create MASTER Dongle

This option will be available only after you save the new generated keys in a key file.

MASTER Dongle is used to encrypt and decrypt files.

STEP 2: Create Custom Library

After creation of the master dongle, click on create custom library.

- Keep the type of protection same that you selected in the first step.
- Now select the software program you want to give protection from the drop down box. Only this software will be allowed to read/write encrypted files.
- There are some predefined extensions for software program you have selected. These will be displayed next to it.
- If you want to add any extension you can add it in the option **“Add Extension”**.

Extensions should be added as below:

extn1,extn2

That is write only the extension without dot (.) and separate them by comma.

- Now click on Make “T-Safe DLL”, select an empty folder and click ok.
- You will see following structure of directory in the selected folder:

{Selected Folder}

DLL

X64

{DLL File as per software}

X86

{DLL File as per software}

- You will get a success message.
- Use 32 bit DLL from X86 folder for encrypting the file
- Use 32 bit or 64 bit file and make installer as per the configuration of software at end user. Same encrypted file will work on both systems.

Protection Type
Select protection type. It should be same as what you selected while making dongle

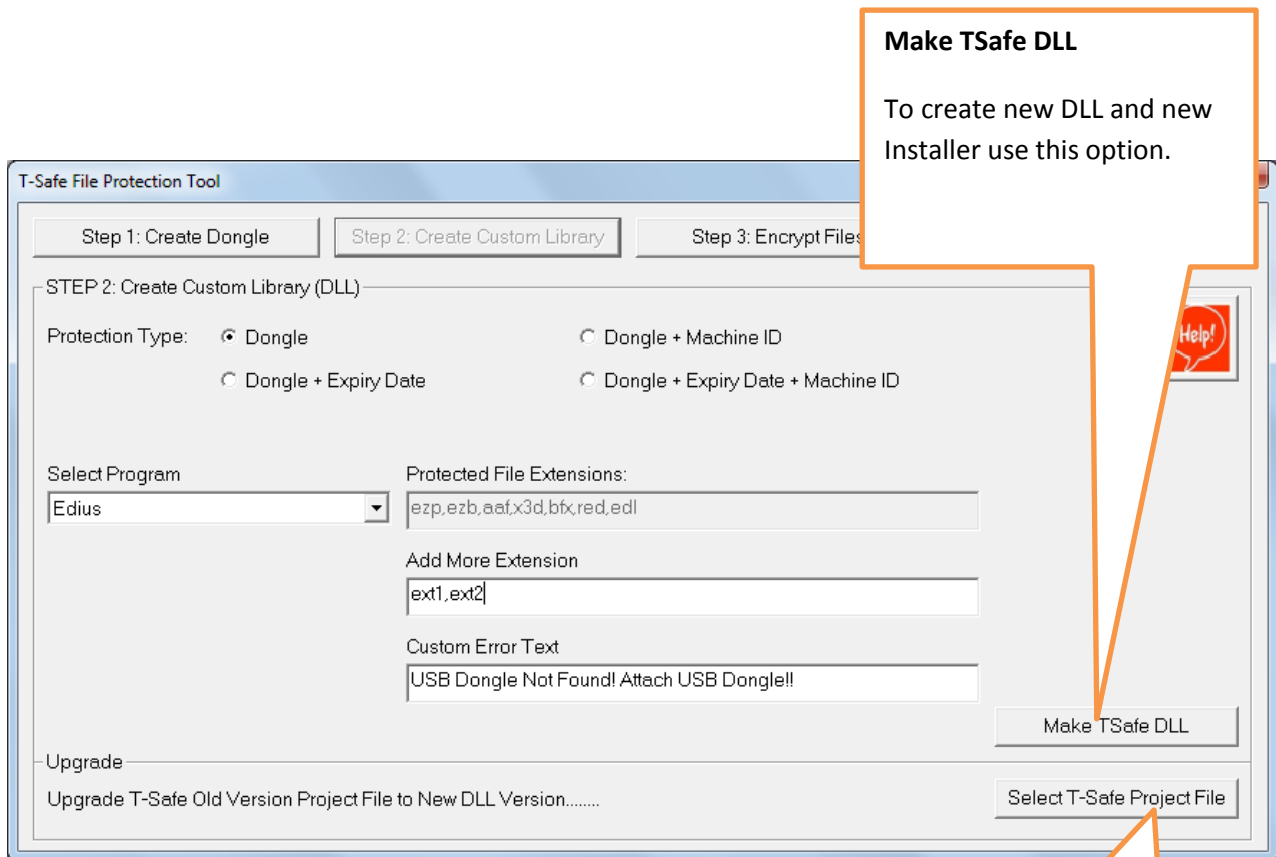
Select Program
Select the desired program for which you want protection,

Protected File Extensions
Here default build in encrypted extensions will be listed.

Add More Extensions
You can add more extensions of your choice as comma separated text.

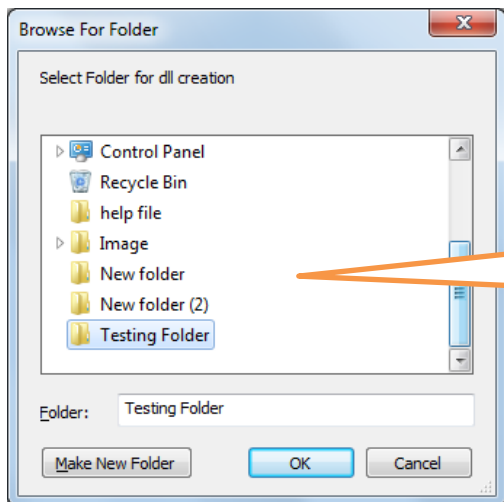
Custom Error Text
You can add custom text with your brand name to be displayed when dongle is not attached and user runs the program.

The screenshot shows the 'T-Safe File Protection Tool' window. At the top, there are four tabs: 'Step 1: Create Dongle', 'Step 2: Create Custom Library', 'Step 3: Encrypt Files', and 'Step 4: Create Installer'. The 'Step 2: Create Custom Library' tab is active. Under this tab, there are three radio button options for 'Protection Type': 'Dongle' (selected), 'Dongle + Machine ID', and 'Dongle + Expiry Date + Machine ID'. Below this is a 'Select Program' dropdown menu with 'Edius' selected. To the right is a 'Protected File Extensions' text box containing 'ezp,ezb,aaf,x3d,bfx,red,edl'. Below that is an 'Add More Extension' text box with 'ext1,ext2' entered. Further down is a 'Custom Error Text' text box with 'USB Dongle Not Found! Attach USB Dongle!!' entered. At the bottom right, there are two buttons: 'Make T-Safe DLL' and 'Select T-Safe Project File'. At the bottom left, there is an 'Upgrade' section with two buttons: 'Upgrade T-Safe Old Version Project File' and 'New DLL Version.....'.



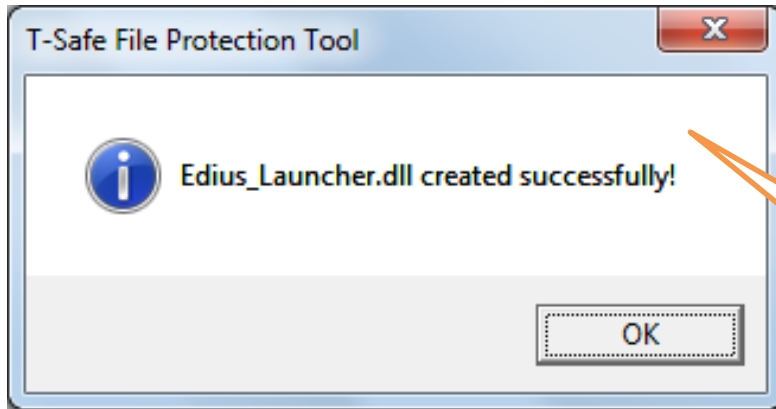
Select TSafe Protect File

Existing users can use this option to convert existing projects to new system.

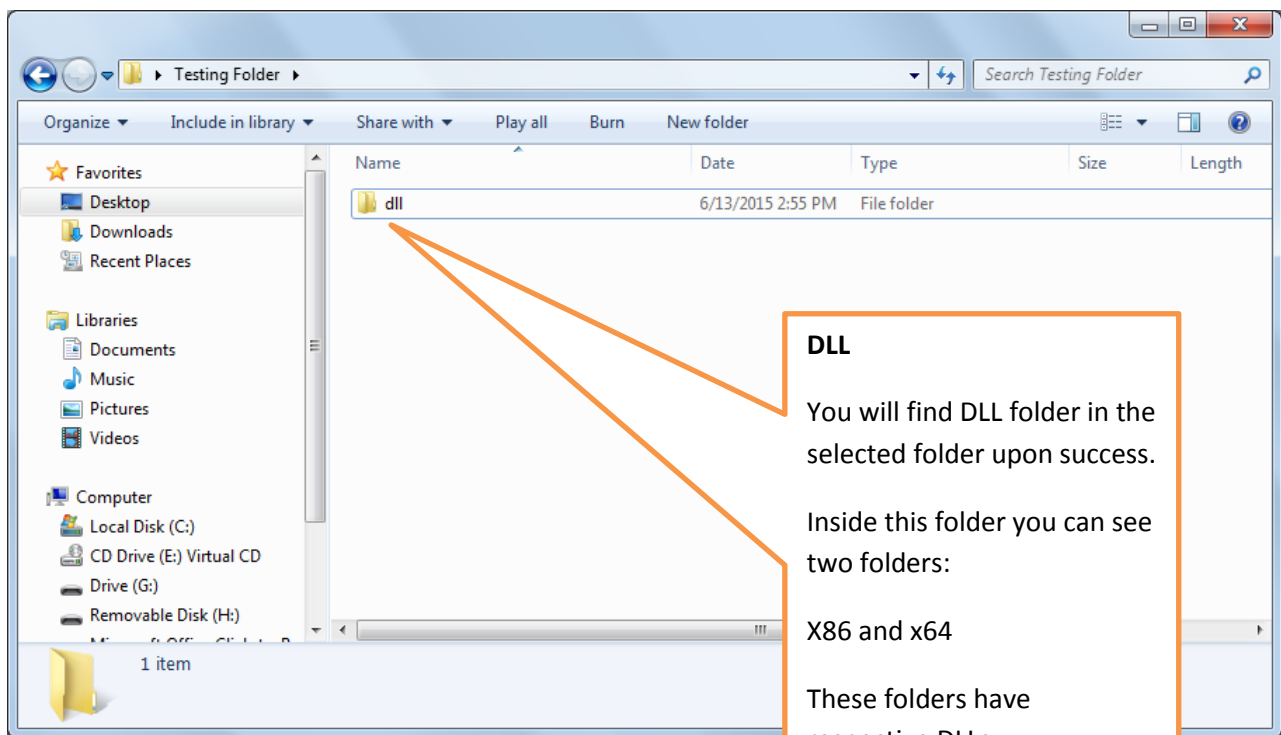


Select Folder

Select an **empty** folder for TSafe DLL.



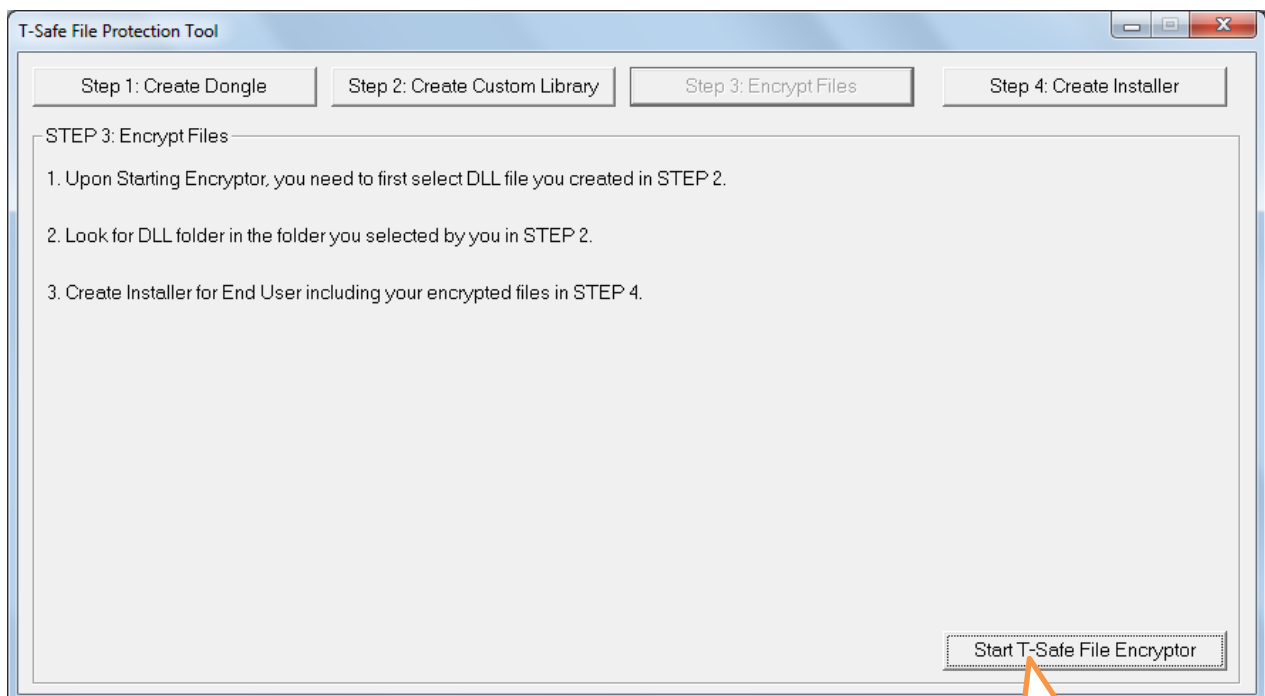
Success Message will be displayed with file names as per your program selection.



If you are recreating the library using the same keys you used to create before then make sure that you create new installer also, and give it to your end users, otherwise your files will not be opened.

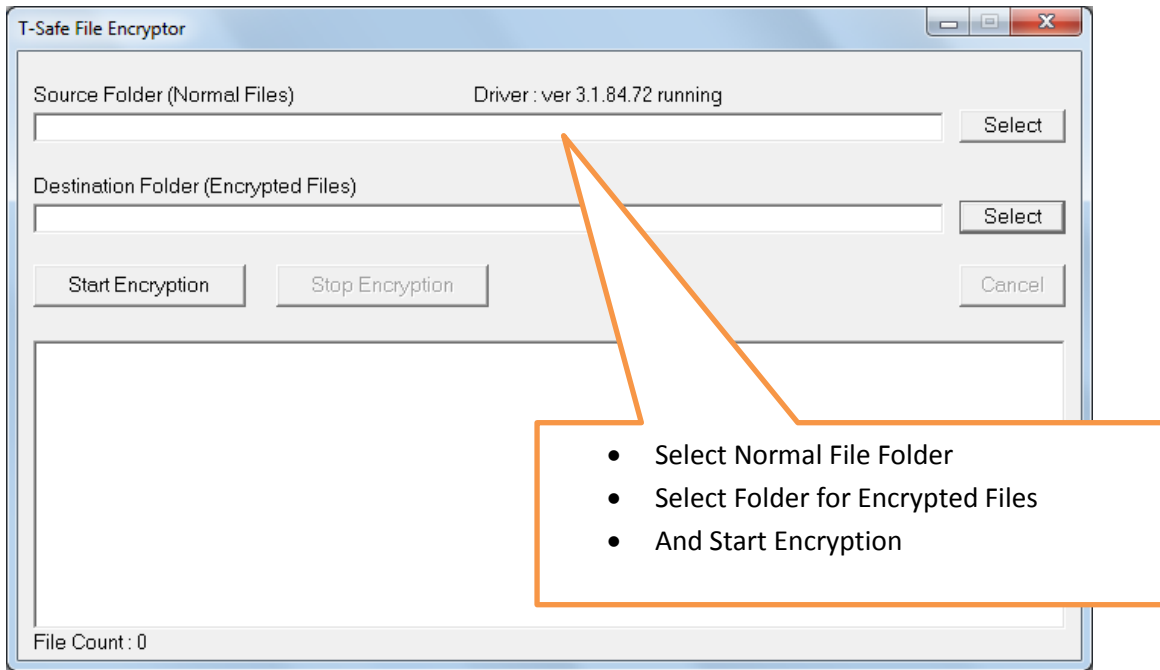
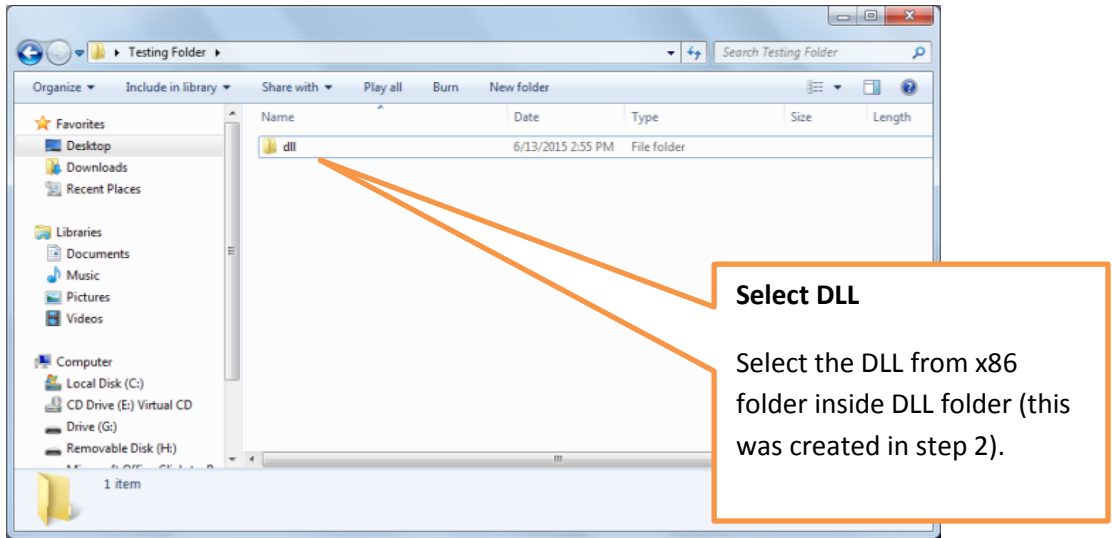
STEP 3: Encrypt Files

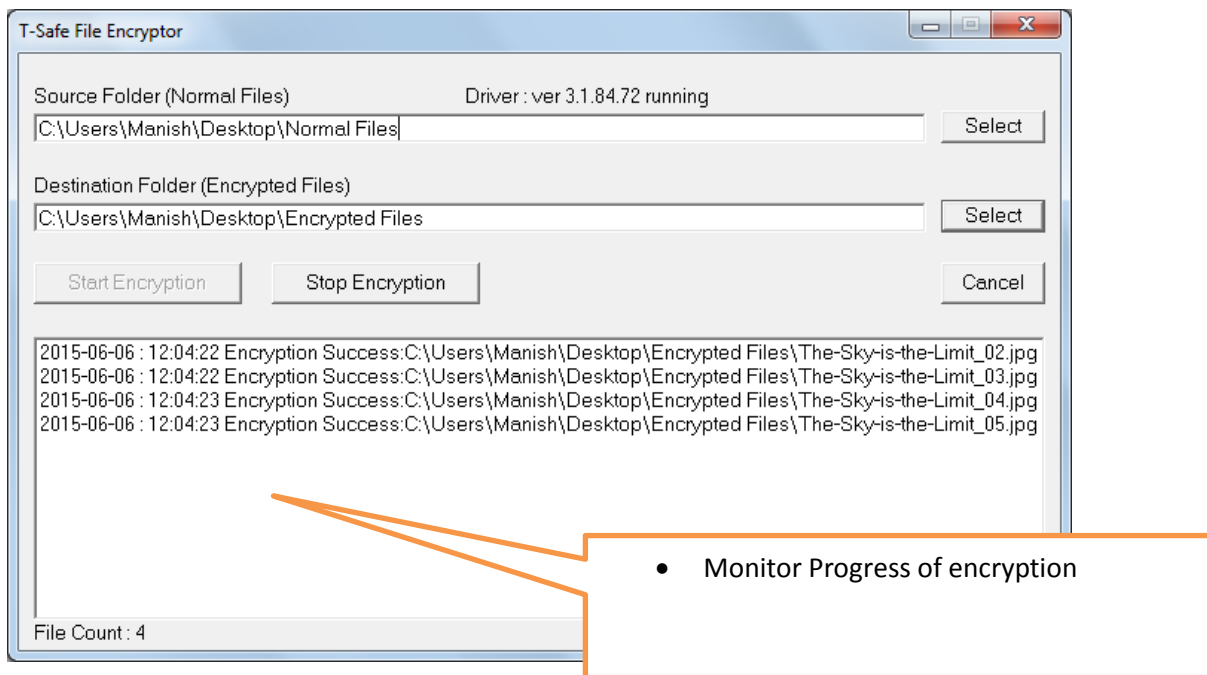
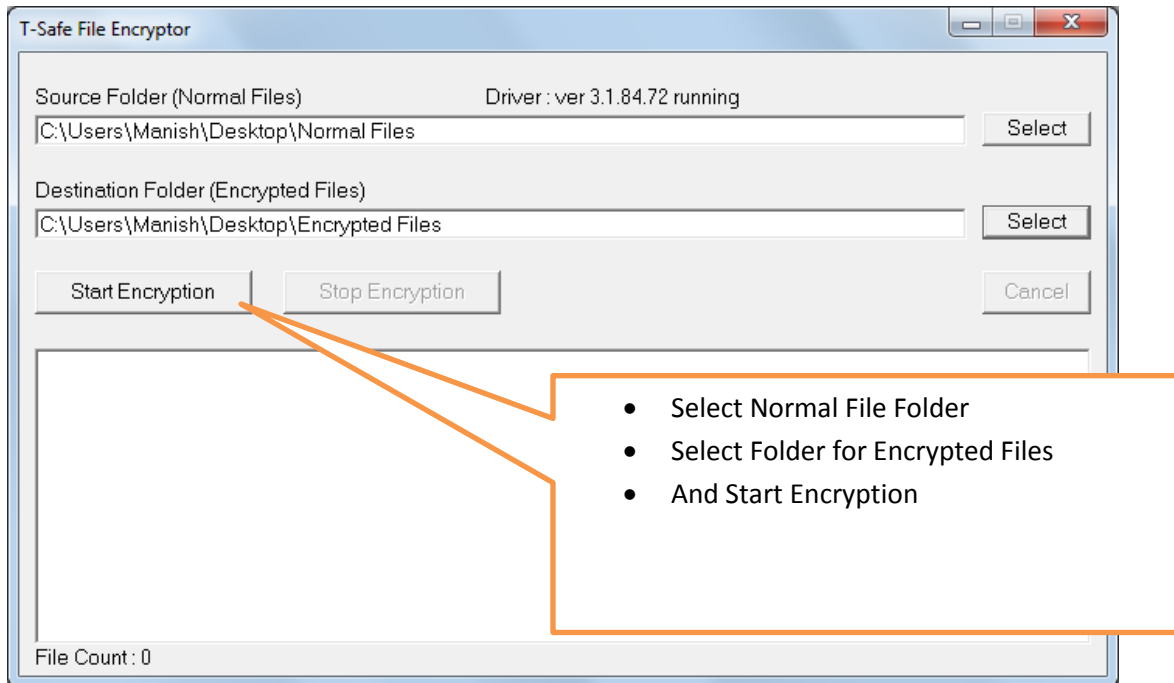
- After generating the dll files in step 2 click on encrypt files tab (this is step 3) and then click **“Start T-Safe File Encryptor”** to encrypt your existing files. **Select the dll files created in step 2 from x86 folder only**, Encryption window will open.
- Select the source folder in which the files(normal files) to be encrypted are present and select the destination folder in which you want to keep the encrypted files, and click on start encryption.
- Encryption completion message will be displayed.
- Encryption will be a slow process so make sure that you use less number of files at a time (recommended size is less than 4 GB).



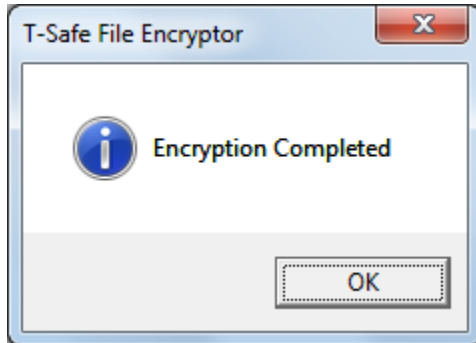
Start TSafe File Encryptor

Click this button to start encryptor.





Wait for Completion Message:

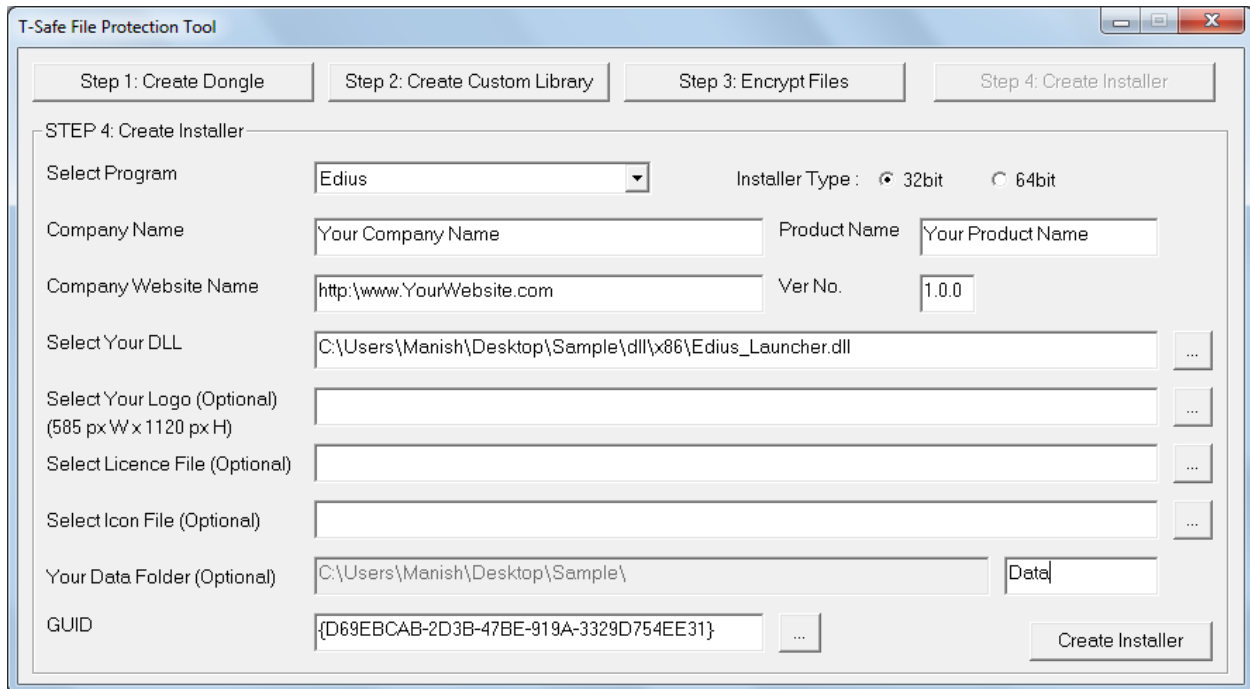


Now the final step is creating an installer.

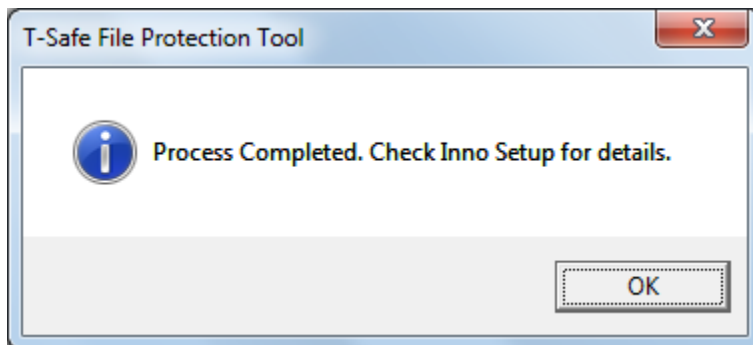
STEP 4: Create Installer.

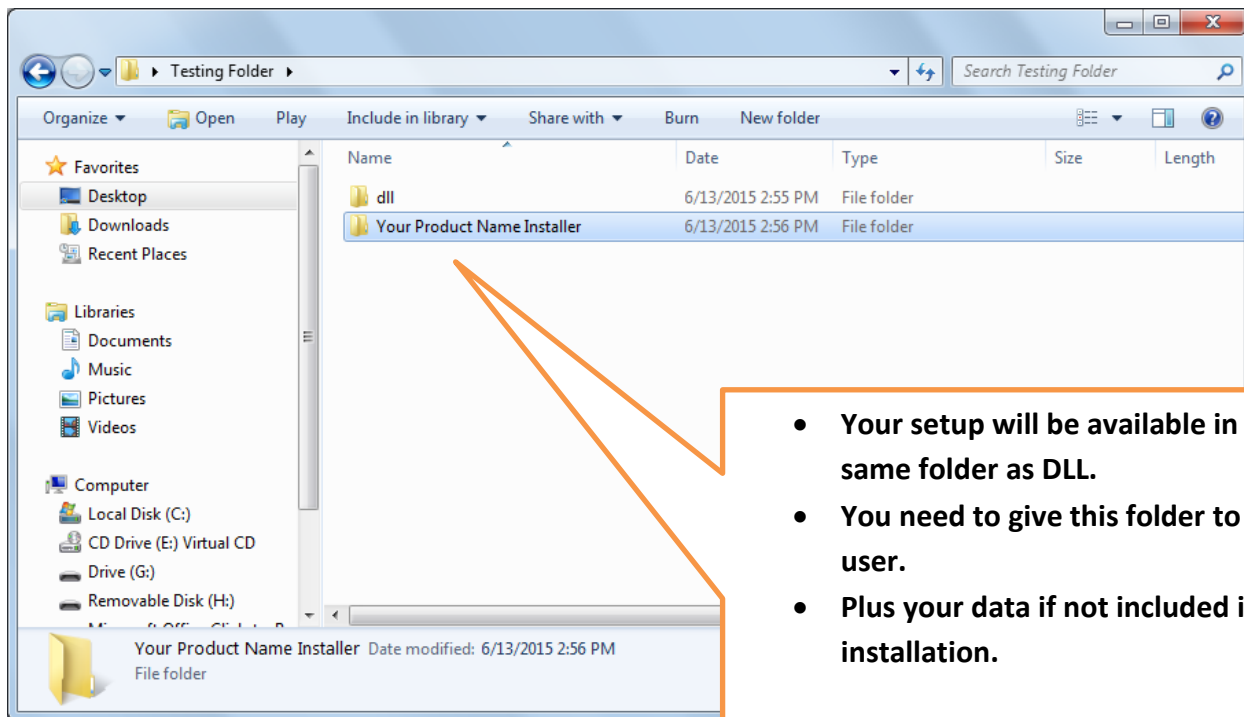
- Select the same software program that you selected in creating custom library.
 - Select the installer type 32 bit or 64 bit based on end user system configuration.
 - If end user software is 64 bit, 32 bit installer or vice versa, will not work and you will get error while installing or while running.
 - Enter the website name and version number of the files and videos.
- Select the dll file in x86 or x64 folder to create 32 bit or 64 bit installer respectively (depending on end users system configuration).
- You can add logo, license file and icon file of your software which will be displayed during installation.

- In case you want to include the encrypted data in the installer, enter the **Data** field as the name of the folder in which you have kept the data to be encrypted which should be in the same folder in which the dll folder is present.
- This option should be used only when you have to protect small amount of data, if you have to protect large amount of data then directly give the encrypted files or data to the user.
- On the end user system, installer will create this folder in “My Documents” folder as below:
{Company Name}/ {Software Name} / {Data Folder Name}
- Then click on create installer.
- Wait for the process to complete.
- Your setup folder will be present in the same folder as that of the dll folder.
- Give all the files present in “output” folder (including all .bin files). To customer or end user.
- If your encrypted files are not included in the installer , include your encrypted data or files..



- Installer uses InnoSetup for creating installer.
- Installation related errors will be displayed in the Innosetup.
- InnoSetup will also display progress.
- For more customizations refer InnoSetup documentation online.





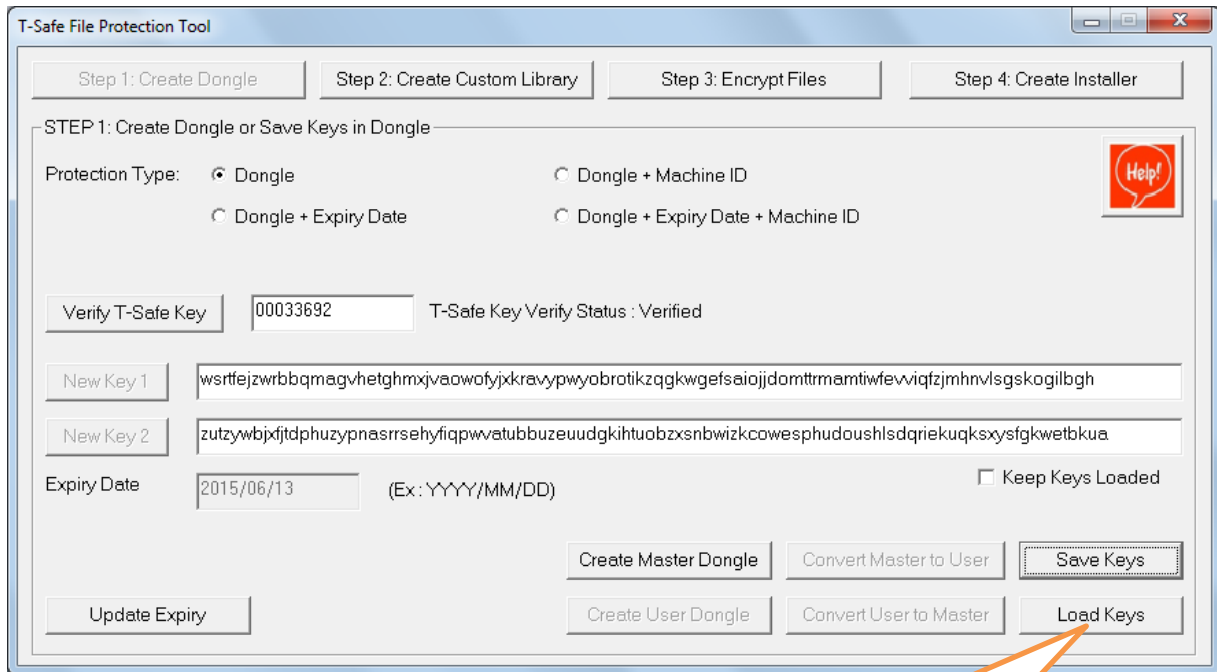
Note:

- Make sure that the users chooses the same folder to install the setup file in the same folder in which the supporting software is already installed, for example if you are protecting an adobe reader file, then make sure that the end user installs the set up file where adobe reader is already installed.
- User needs to open the setup first after inserting the dongle and then open the encrypted file.

How to create a user dongle?

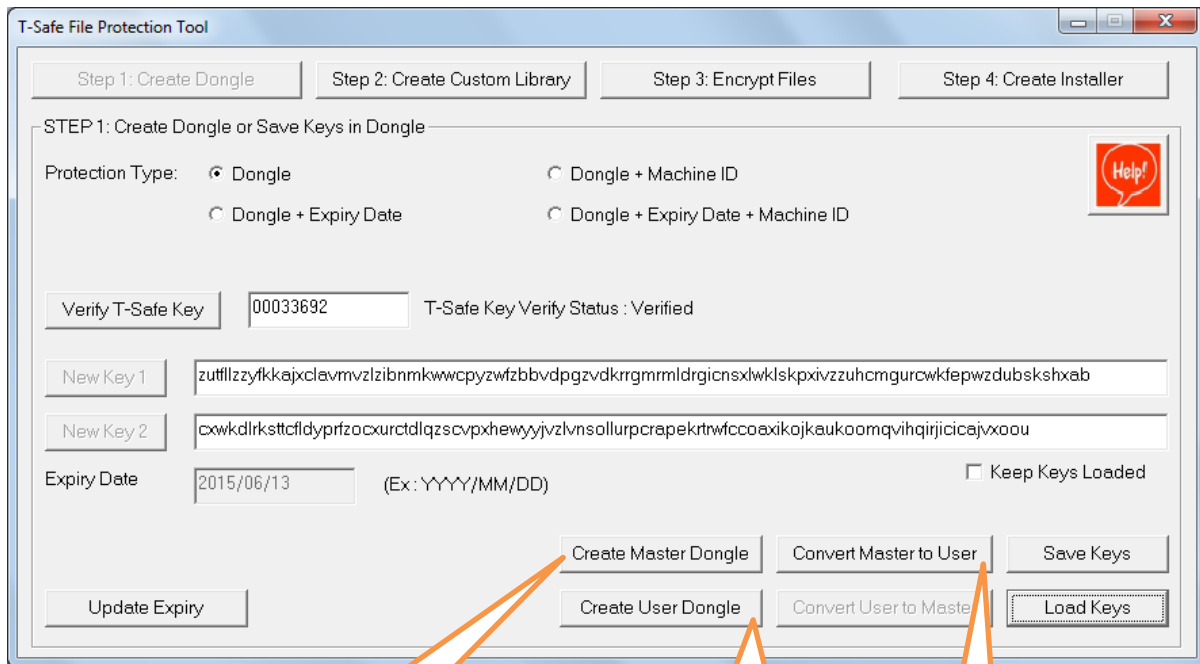
- Create one **“USER dongle”** for each customer.
- To create a user dongle connect a new dongle.
- You can see an option called **‘Load Keys’** at the right bottom of the T-Safe Software Protection Tool, click on it and load the keys by selecting **.tasafekeys** file you saved before creating MASTER Dongle.
- Now click on **‘Create User Dongle’**. Your user dongle is created!
- Remove the dongle and follow the same process for all the user dongles you want to create.

If you want to create large number of user dongles, check the checkbox **‘Keep Keys Loaded’**. To avoid loading keys again and again.



Load Keys:

To create USER Dongle, you must load keys from the key file.



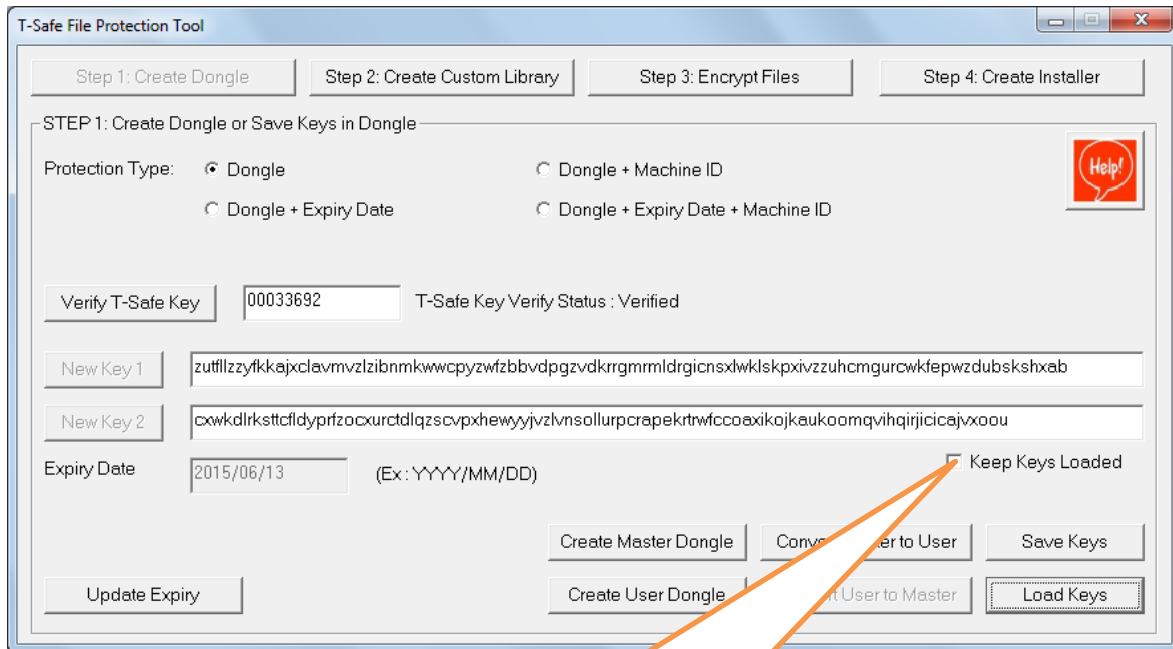
Create MASTER Dongle.

After Loading keys, you can create MASTER as well as USER Dongles

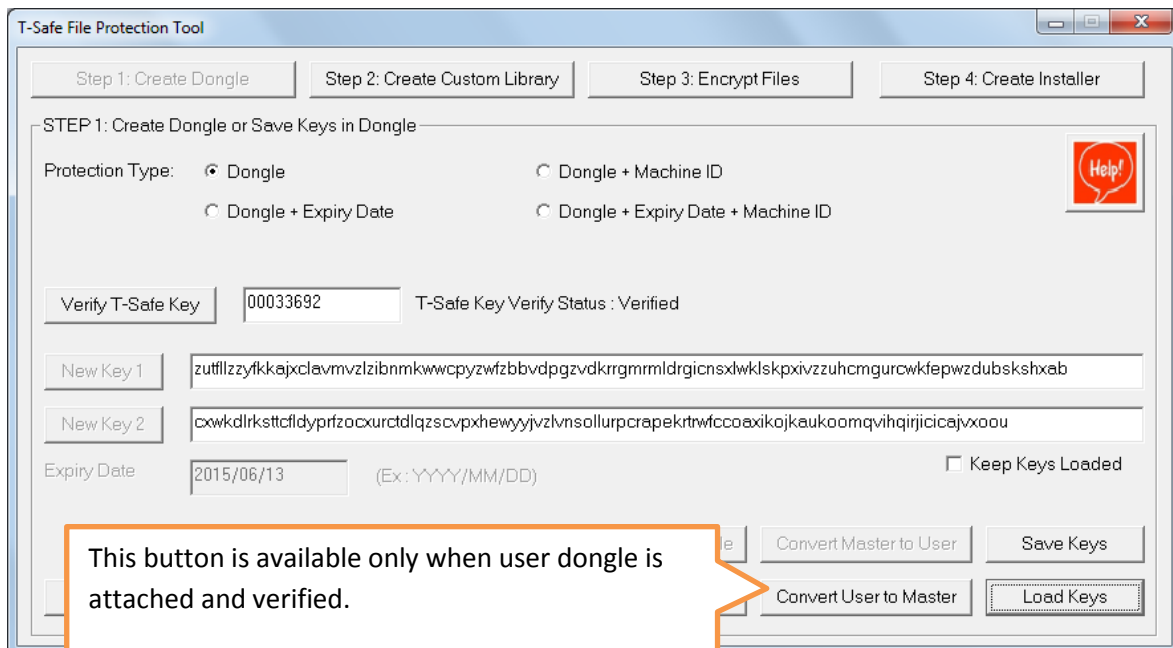
Create USER Dongle.

After Loading keys, you can create MASTER as well as USER Dongles

You can convert a MASTER to USER Dongle.



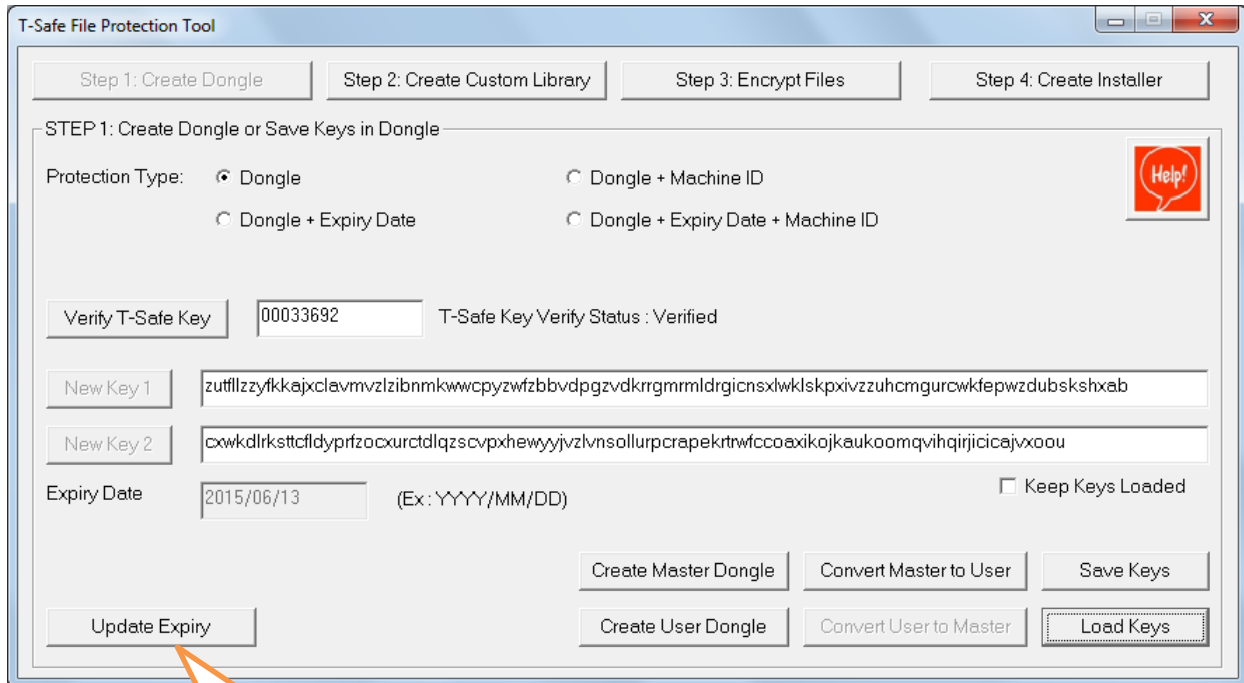
To make multiple USER Dongles, tick this check box so that keys will remain displayed.



This button is available only when user dongle is attached and verified.
You can also convert a USER Dongle to MASTER dongle if both Keys are known.

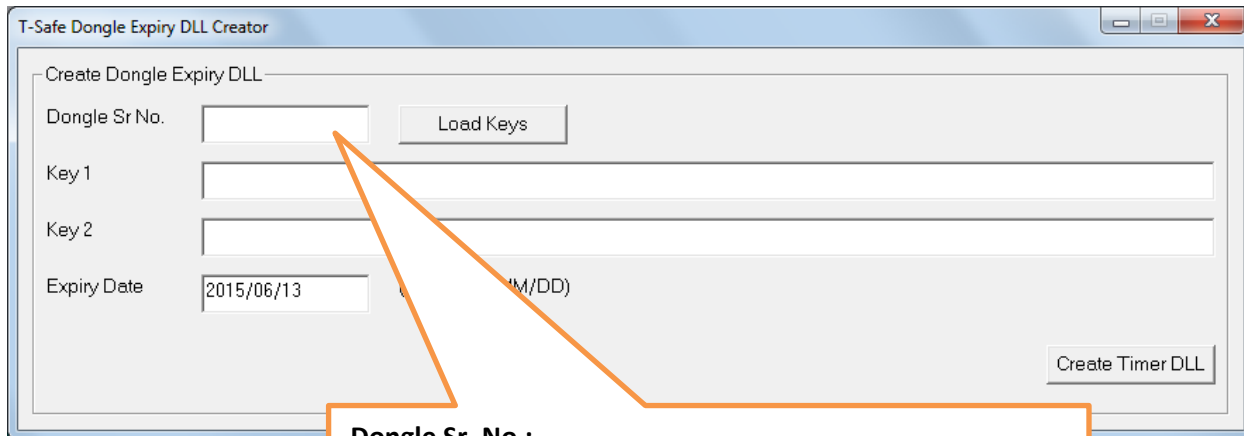
How to update expiry date?

- You need to update the expiry date of the dongle when requested by the users.
- To update the expiry date ask the customer to give the serial number of the dongle or take from your own record if you have maintained customer wise dongle record.
- Now click on the option '**Update Expiry**' and enter the serial number of the dongle of customer, load the same keys from **.tsafekeys** file you used to create the user dongle, and enter the new expiry date then click on 'create timer dll'.
- Select an empty folder and click ok.
- Now open the folder and you can find two files one will be a **.exe** file and the other will be a **.dll** file. Give the files to the customer and ask him to run the .exe file, the expiry date will get updated in the dongle!



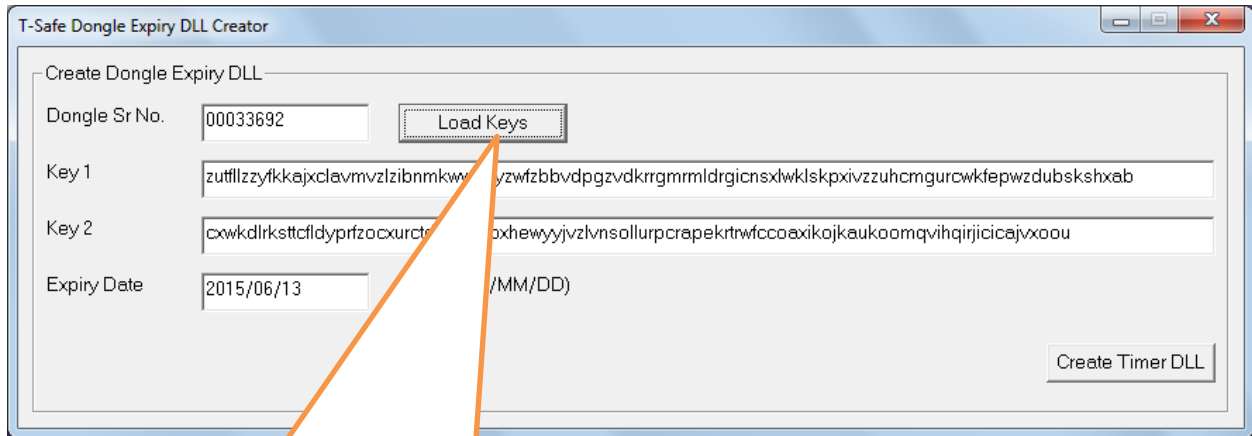
Update Expiry:

Use this option to increase the expiry date in the dongle at customer end.



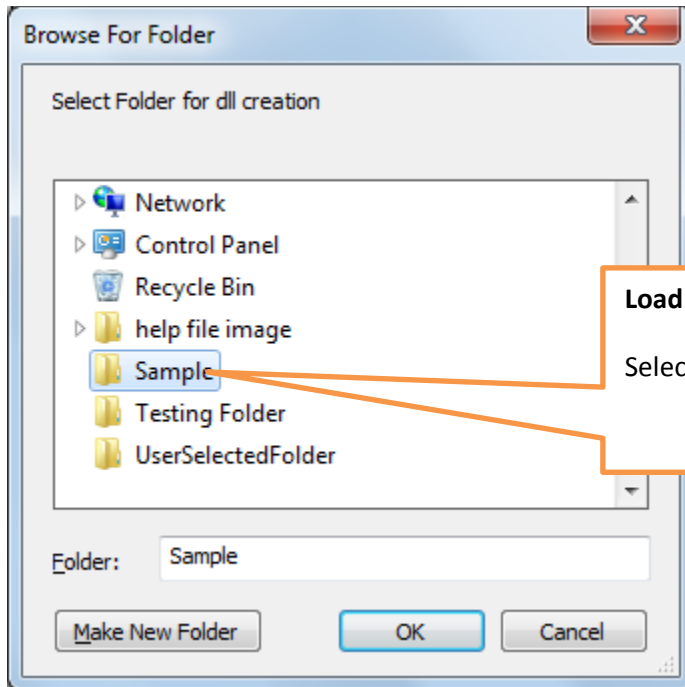
Dongle Sr. No.:

Type Dongle Serial Number. Ask customer to give dongle serial number or best way is to maintain record of customer and dongle serial number yourself.



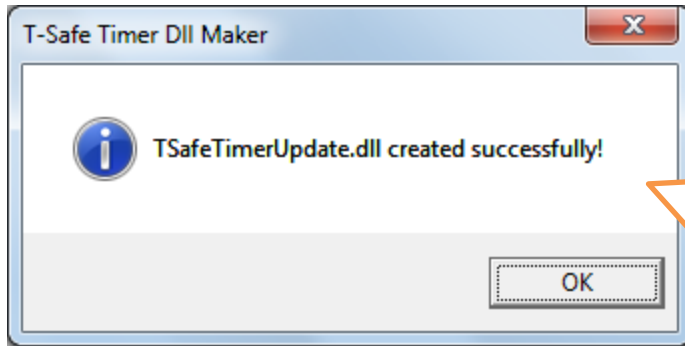
Load Keys:

You must select the keys file and load same keys as used in making dongle..

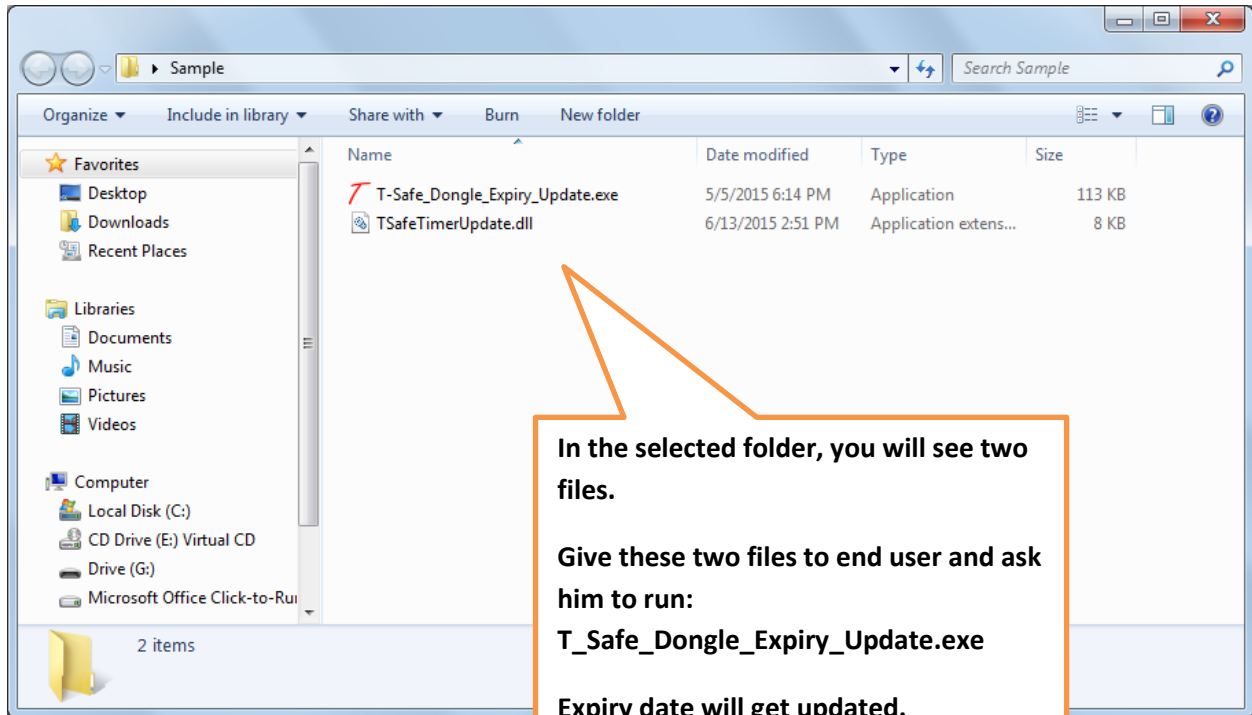


Load Keys:

Select an empty Folder..



You will get Success message.



In the selected folder, you will see two files.

Give these two files to end user and ask him to run:

T_Safe_Dongle_Expiry_Update.exe

Expiry date will get updated.

Problems in Installation ?

- If you face any problem in Installation, make sure that your internet connection is on because sometimes Inno setup tries to download some files.