







VIRTUAL DRIVE

Guide for Windows

<p>A DRIVE in a File System to keep files safe</p> 	<p>Google Drive *</p>  	<p>Share Encrypted DRIVE on Google Drive</p> 
--	---	--

Virtual DRIVES with **AES 256 Encryption** that can be **Shared** in Closed Groups and used like **Physical Drives.**

* Will also work with other cloud storage like iCloud, for which desktop synchronization tools are available.

SoftwareFileProtection.com

Contact



Developed and Marketed By

Innovative Matrix Softech Pvt. Ltd.

Email: support@isohelpline.com

Web: www.SoftwareFileProtection.com

Add: [7013, 7th Floor, Emerald House,
Sarojini Devi Road, Next to Parklane Hotel, Near State bank of Mysore, Paradise Circle,
Hyderabad / Secunderabad- 500 003 India](#)



Contents

Contact.....	2
Contents.....	3
License Agreement.....	4
GoSafe Drive Key Customizer Tool.....	7
GoSafe Drive	12
Sharing and synchronizing the encrypted file on Google Drive.....	14



License Agreement

Note: You cannot share the product referred herein. You cannot sale or resale the product referred herein.

IMPORTANT - READ CAREFULLY BEFORE DOWNLOADING, INSTALLING OR COPYING TO YOUR COMPUTER ANY FILE(S) CONTAINED HEREWITH.

THE FILE(S) AND OTHER INFORMATION PROVIDED HEREWITH ARE COPYRIGHTED. BY DOWNLOADING ANY FILE PROVIDED HEREWITH TO YOUR COMPUTER, YOU ARE ACCEPTING AND AGREEING TO THE TERMS OF THIS LICENSE AGREEMENT. IF YOU ARE NOT WILLING TO BE BOUND BY THE TERMS OF THIS LICENSE AGREEMENT, PRIOR TO DOWNLOADING OR COPYING ANY FILE(S) TO YOUR COMPUTER, YOU MUST DECLINE ACCESS TO SUCH MATERIALS.

1. GRANT OF LICENSE: Subject to the provisions contained herein and to the payment of all applicable fees, the Innovative Matrix Softech Private Limited grants you a non-exclusive, non-transferable license to the materials contained herewith (the "Product"). Your licensed rights to the Product are limited to the following:

(a) This License Agreement does not convey to you an interest in or to the Product, but only a limited right of use revocable in accordance with the terms of this License Agreement.

(b) You may install one copy of the Product on, and permit access to it by, a single computer owned, leased or otherwise controlled by you. In the event that computer becomes dysfunctional, such that you are unable to access the Product, you may transfer the Product to another computer, provided that the Product is removed from the computer from which it is transferred and the use of the Product on the replacement computer otherwise complies with the terms of this Agreement. Neither concurrent use on two or more computers nor use in a local area network or other network is permitted. You shall not print, merge, adapt, translate, modify, rent, lease, sell, sublicense, assign or otherwise transfer any of the Product, or remove any proprietary notice or label appearing on any of the Product. You may copy the Product only for backup purposes.

(c) You acknowledge and agree that the Product is proprietary to the Copyright holder, INNOVATIVE MATRIX SOFTECH PRIVATE LIMITED, and is protected under Indian copyright law and international copyright treaties. You further acknowledge and agree that all rights, title and interest in and to the Product, including all intellectual property rights, are and shall remain with Innovative Matrix Softech Private Limited.

(d) You shall provide INNOVATIVE MATRIX SOFTECH PRIVATE LIMITED or any designee of INNOVATIVE MATRIX SOFTECH PRIVATE LIMITED with all information necessary to assure compliance with the terms of this Agreement. In the event you are not in compliance with the terms of this Agreement through the actions of unrelated third parties, you shall use your best efforts to cooperate with INNOVATIVE MATRIX SOFTECH PRIVATE LIMITED and any of its designees to assure compliance.



2. LIMITED WARRANTY:

(a) INNOVATIVE MATRIX SOFTECH PRIVATE LIMITED warrants for your benefit alone that, unless disclosed in the Product to the contrary, INNOVATIVE MATRIX SOFTECH PRIVATE LIMITED can license the Product and all copyright and trademarks related thereto or therein.

(b) THE EXPRESS WARRANTIES SET FORTH IN THIS SECTION 2 CONSTITUTE THE ONLY WARRANTIES WITH RESPECT TO THE PRODUCT AND INNOVATIVE MATRIX SOFTECH PRIVATE LIMITED MAKES NO OTHER REPRESENTATION OR WARRANTY OR CONDITION OF ANY KIND, WHETHER EXPRESS OR IMPLIED (EITHER IN FACT OR BY OPERATION OF LAW) WITH RESPECT TO ANY OF THE PRODUCT, INCLUDING, WITHOUT LIMITATION, WITH RESPECT TO THE SUFFICIENCY, ACCURACY OR UTILIZATION OF, OR ANY INFORMATION OR OPINION CONTAINED OR REFLECTED IN, ANY OF THE PRODUCT. INNOVATIVE MATRIX SOFTECH PRIVATE LIMITED EXPRESSLY DISCLAIMS ALL WARRANTIES OR CONDITIONS OF MERCHANTABILITY OR FITNESS FOR A PARTICULAR PURPOSE. NO OFFICER, DIRECTOR, EMPLOYEE, MEMBER, AGENT, REPRESENTATIVE OR PUBLISHER OF THE COPYRIGHT HOLDER IS AUTHORIZED TO MAKE ANY MODIFICATION, EXTENSION, OR ADDITION TO THIS LIMITED WARRANTY.

3. INDEMNIFICATION: INNOVATIVE MATRIX SOFTECH PRIVATE LIMITED, any agent, representative, publisher or distributor of the Product, or any of their respective directors, officers, employees, agents, representatives or members (the "INNOVATIVE MATRIX SOFTECH PRIVATE LIMITED Indemnified Parties") shall have no liability for, and you shall defend, indemnify and hold each of the INNOVATIVE MATRIX SOFTECH PRIVATE LIMITED Indemnified Parties harmless from and against, any claim, loss, demand, liability, obligation and expenses (including reasonable attorneys' fees) based upon or arising out of any injury or damage, or any product liability claim, including but not limited to, any personal or bodily injury or property damage, arising out of, pertaining to, or resulting in any way from, the use or possession of any of the Product by you and/or any of your directors, officers, employees, representatives, agents or contractors.

4. LIMITATION OF LIABILITY:

(a) You acknowledge that each of INNOVATIVE MATRIX SOFTECH PRIVATE LIMITED's obligations and liabilities with respect to the Product are exhaustively defined in this Agreement. You are responsible for the consequences of any use of any of the Product (whether or not such use was consistent with the license granted hereunder) created therefrom. Whether or not INNOVATIVE MATRIX SOFTECH PRIVATE LIMITED has been advised of their possibility, neither INNOVATIVE MATRIX SOFTECH PRIVATE LIMITED nor any of its representatives or agents, directors, officers, employees, or members, shall be liable, whether under contract, tort (including negligence) or otherwise, for any indirect, special, punitive, incidental or consequential loss, damage, cost or expense of any kind whatsoever and howsoever caused, that may be suffered by you or any of your directors, officers, employees, agents, representatives or contractors or any third party.

(b) If at any time an allegation of infringement of any rights of any third party is made, or in INNOVATIVE MATRIX SOFTECH PRIVATE LIMITED's opinion is likely to be made, with respect to any of the Product, INNOVATIVE MATRIX SOFTECH PRIVATE LIMITED may, at its option and at its own expense (i) obtain for you the right to continue using the Product, (ii) modify or replace the Product or any portion thereof so as to avoid any such claim of infringements, or (iii) refund to you the License Fee. INNOVATIVE MATRIX SOFTECH PRIVATE LIMITED shall have no liability to you if any claim of infringement would have been avoided except for your refusal to use any modified or replacement Product supplied or offered to be supplied pursuant to this Section 4(b) or to otherwise cease using the Product. Notwithstanding anything contained in this Agreement, and except as set forth in Section 4(b) hereof, INNOVATIVE MATRIX SOFTECH PRIVATE LIMITED's liability to you for damages pursuant to this Section 4(b), if any, shall not exceed the amounts of the License Fee paid by you for the Product subject to any such claim.

(c) Section 4(b) state the entire liability of INNOVATIVE MATRIX SOFTECH PRIVATE LIMITED with respect to the infringement or alleged infringement of any third party rights of any kind whatsoever by any of the Product.



5. TERMINATION: This Agreement may be terminated immediately by INNOVATIVE MATRIX SOFTECH PRIVATE LIMITED upon breach of any provision of this Agreement by you. Upon any termination of this Agreement, you shall immediately discontinue the use of the Product and shall within ten (10) days either return file(s) on diskette(s), if any, to INNOVATIVE MATRIX SOFTECH PRIVATE LIMITED or certify in writing to INNOVATIVE MATRIX SOFTECH PRIVATE LIMITED that the Product has been deleted from your computer and is eliminated from your premises.

6. GOVERNING LAW; ATTORNEY'S FEES: This Agreement shall be governed by the laws of the Republic of India without reference to its conflict of laws and provisions and you further consent to jurisdiction by the state and federal courts sitting in the state of Andhra Pradesh, India.

7. MISCELLANEOUS: This Agreement constitutes the complete and exclusive agreement between INNOVATIVE MATRIX SOFTECH PRIVATE LIMITED and you with respect to the subject matter hereof, and supersedes all prior oral or written understandings, communications or agreements not specifically incorporated herein. This Agreement may not be modified except in writing duly signed by an authorized representative of INNOVATIVE MATRIX SOFTECH PRIVATE LIMITED and you. If any provision of this Agreement is held to be unenforceable for any reason, such provision shall be reformed only to the extent necessary to make it enforceable, and such decision shall not affect the enforceability (i) of such provision under other circumstances, or (ii) of the remaining provisions hereof under all circumstances. Headings shall not be considered in interpreting the Agreement.

8. EXPORT: You cannot load or export or re-export any of the Product or any underlying information or technology without prior consent from the Innovative Matrix Softech Private Limited. You may not load or export or re-export any of the Product or any underlying information or technology except in full compliance with all applicable laws of republic of India and other applicable laws and regulations.

9. By agreeing to this license agreement, you also agree to general terms and conditions given on our website www.isohelpline.com (either on home page or product related pages)

BY ACCESSING THE PRODUCT, YOU ACKNOWLEDGE THAT YOU HAVE READ THE TERMS OF THIS LICENSE AGREEMENT AND AGREE TO BE BOUND BY ITS TERMS.



GoSafe Drive is designed for secure sharing of information considered to be known only to few people within the organization (close User Groups).

GoSafe Drive is also suitable for protecting personal data, financial data and other privacy related information.

GoSafe Drive works as a normal drive and you can even install your accounting software in it and keep all accounting data in a music or video file.

With Google drive desktop application users can synchronize the file and at the same time mount it as a drive locally and use it like any other physical drive (flash drive / pen drive).

Here is a brief guide on how to use “GoSafe Drive” and “GoSafe Drive Key Customizer”. GoSafe DRIVE File Protection uses very strong AES 256 encryption mechanism.

There are two steps in GoSafe Drive File Protection

1. GoSafe Drive Key Customizer.
2. GoSafe Drive.



Step 1: GoSafe Drive Key Customizer

- Insert your **GoSafe Drive** dongle.
- Open “GoSafe Drive key Customizer” tool/software.
- Enter the Dongle password, this is admin password, by default the password is 123456, so make sure that you change the password by clicking on “Change password”. Enter the changed password and click on “GO”.
- You can reset your password if you have the encryption keys, click on “**Reset Password**” and load the encryption key, enter the new password and click “OK”.
- Now click on key 1, key 2, key 3, or copy the required keys of existing groups, save the keys in a safe place and click on “**Update GoSafe Drive Key**”.
- For each dongle you have three keys and hence you can create three encrypted groups.

To create user groups, first make encryption keys for the group and accordingly add the encryption keys in the dongle.

For example:

Group 1:

enqgsmdxqflbjnzffrqhlxmubdjsnjxekpfwutoxlvxzldvukuhmjtggccwxglsnofrvctqiqfvnoeiuncnybfjcpzbotsyrgb

Group 2:

hyklInviktutwxfbjibueizokeqkvwkuvzhfgxawtzktqldvvqeyqdnkupvybaxzwanthdfcjtlinabgosbgzxcnvcxjdoaum

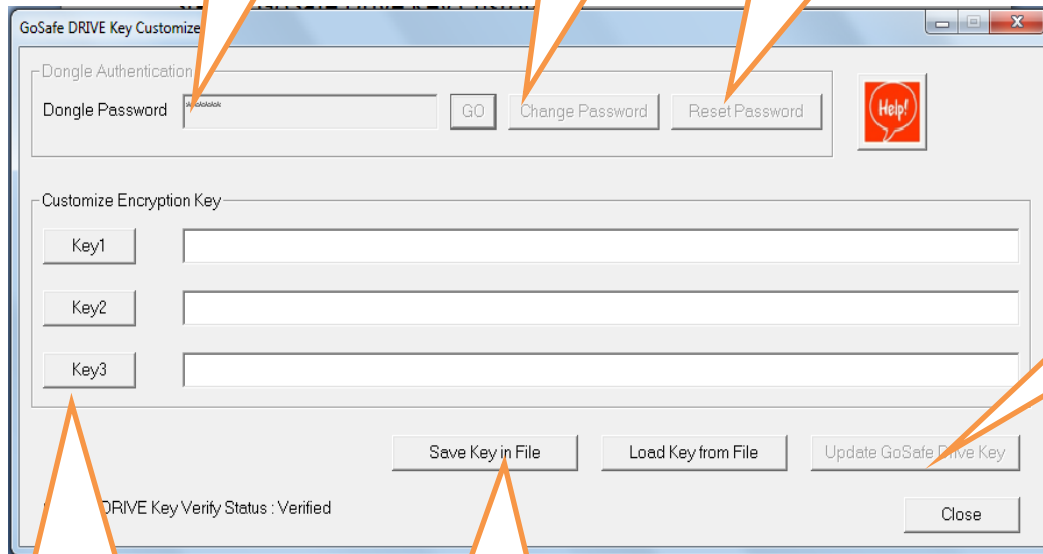
Group 3:

okheopglfvkdfkzljwbzqwkwllgxqdhcujbccefpeusvelrazgucawgfqjohnugzelgtsoltoxacfnciklkwpcqmkeovfrdtvy

Enter the dongle password and click on "GO"

Click here to change password.

You can reset dongle password if you know the encryption keys of the dongle.



Click on "Update GoSafe Drive Key" after saving.

Generate keys or paste keys shared by the group members.

Save the keys in a safe place

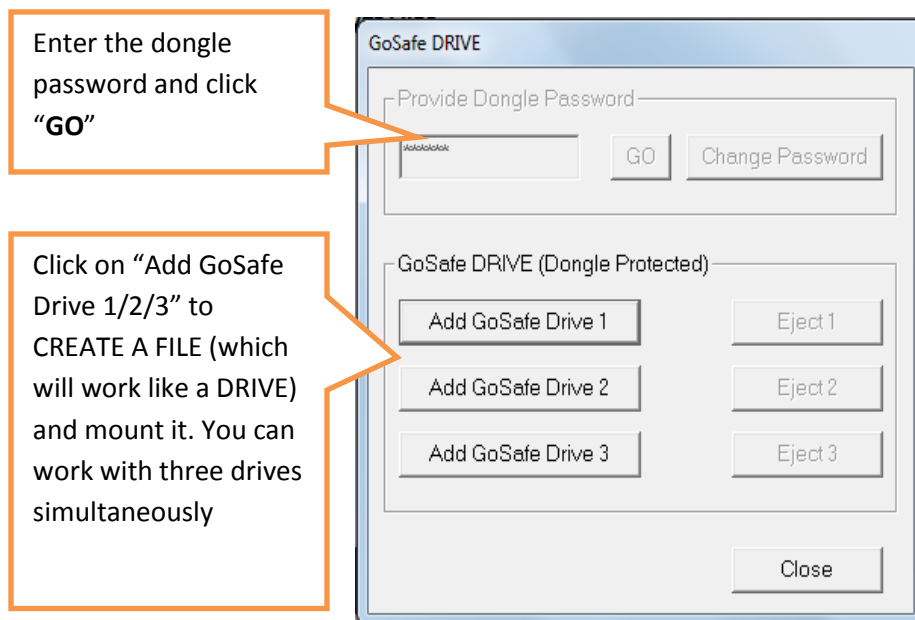
- Share the key between your group members, Ask the remaining group users to copy the same key, while creating keys in **"GoSafe Key Customizer"** as key1 or key2 or key3, they can use remaining two keys for two other groups.
- Once you change the keys in dongle you cannot read/write the data encrypted with previous keys.
- You can generate a lost dongle by loading the same keys which were used to create the dongle into a new dongle.



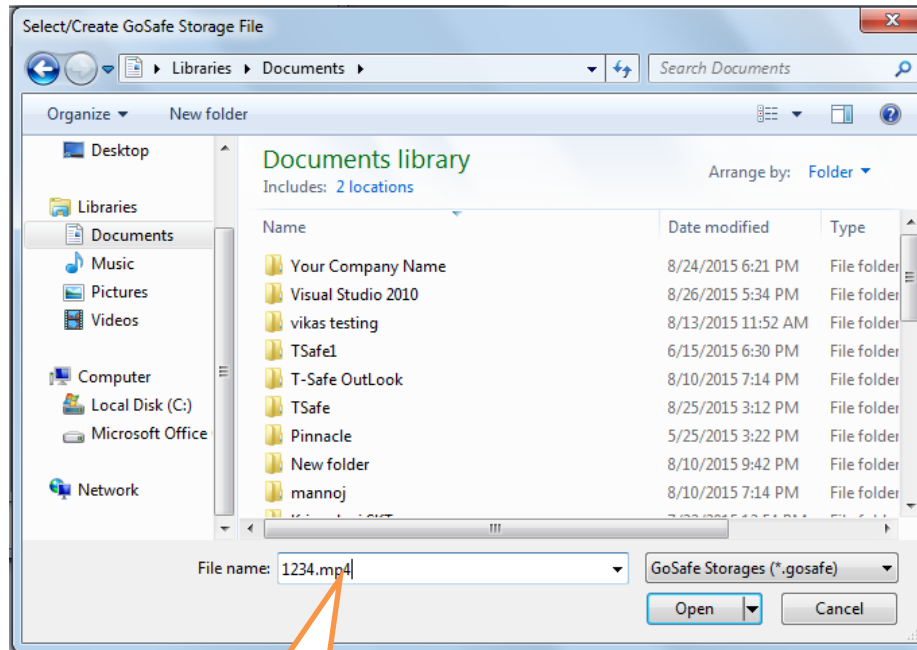
- You can change the dongle keys any number of times (about 1000) times.

Step 2: GoSafe Drive

- Connect GoSafe Drive dongle, Open GoSafe Drive, Enter password and click “OK”.
- Click on “**Add GoSafe Drive 1**”.



- By default the file will be assign **.gosafe** extension. You can have any other extension of your choice like **.mp3**, **.mp4**, **.avi** etc and click on “Open”.

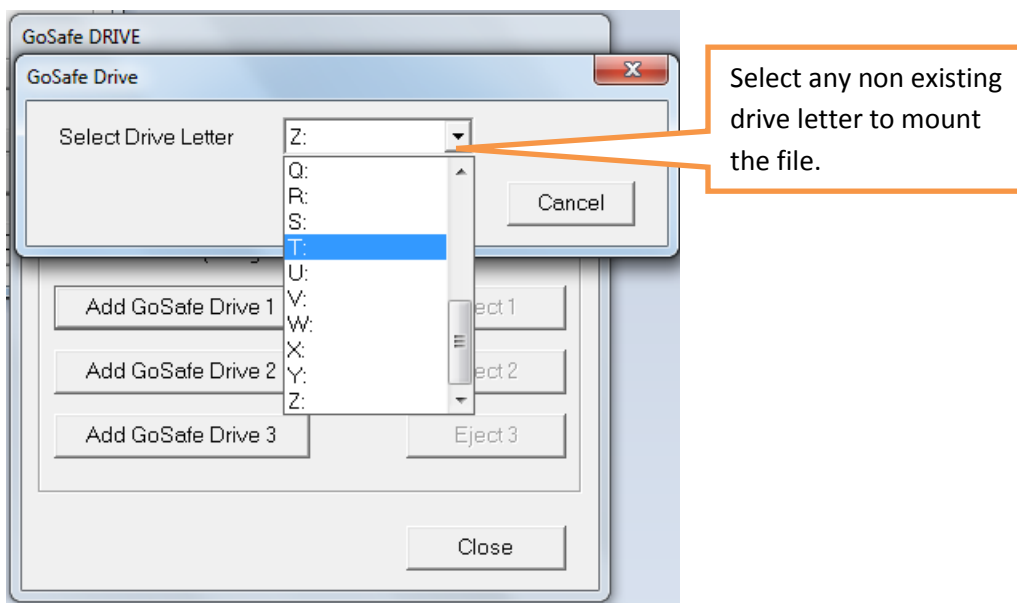
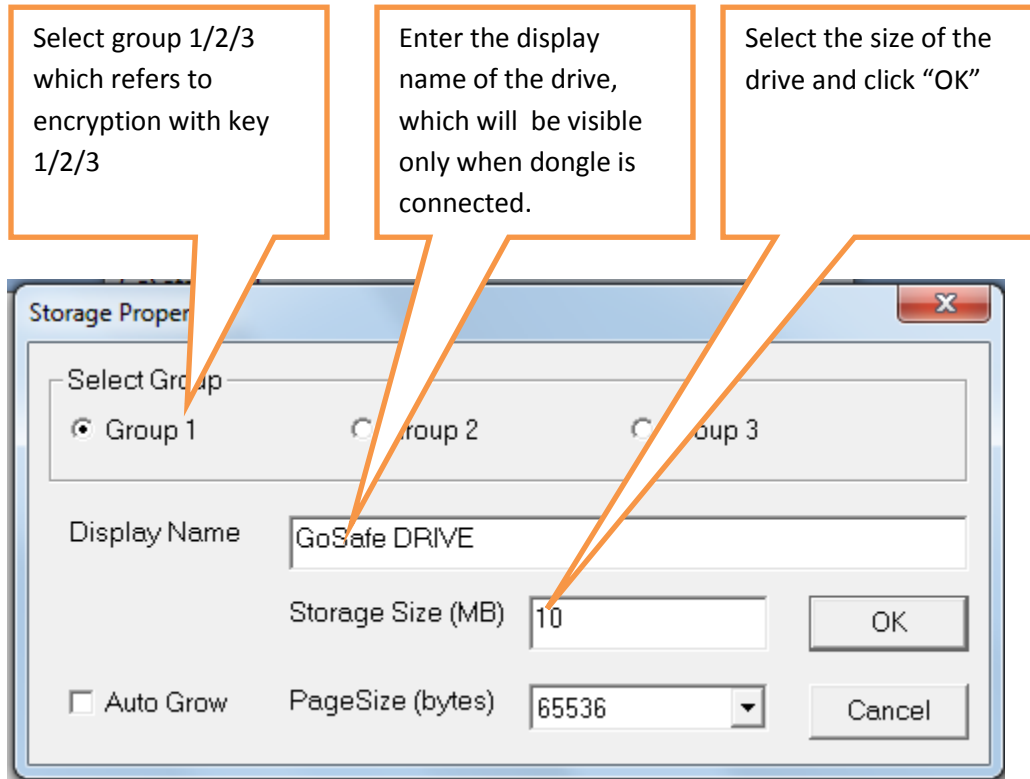


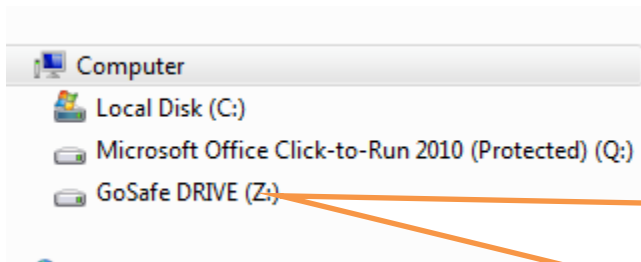
Create a file of any format (this file will mount as a drive) click on "Open"

- Now select the group, if you select group 1, then your files are encrypted using key1, similarly for group 2, key 2 will be used and for group 3, key3 will be used. So file will be mountable as a drive using any dongle having the same key (any of three keys in the dongle can match).
- The **"Display Name"** will be your drive name and it will be displayed when drive is visible (or mounted) so give a name which is more appropriate to identify the data in the drive.
- Select the size of the drive.
- **"Page Size"** by default is good, this can be changed by you if you have advanced knowledge of how page size works with drive formatting and other parameters of the system



➤ Click “OK”, Select any drive letter.



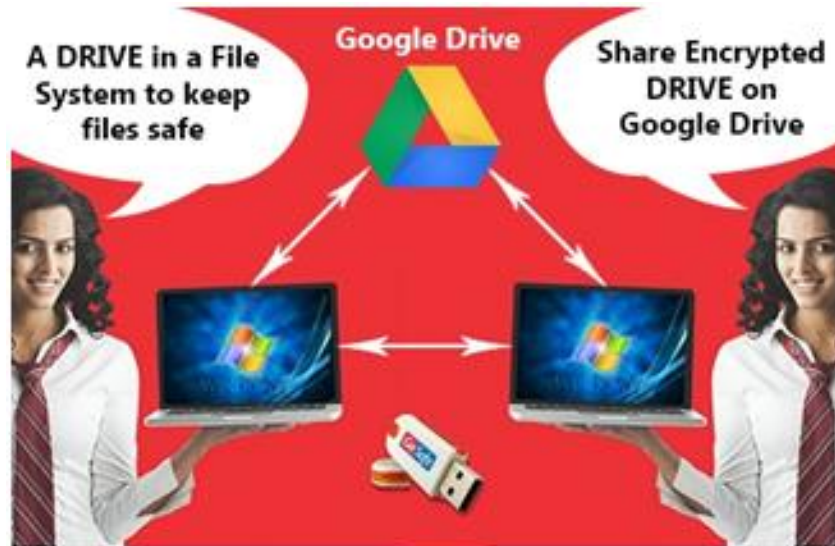


Mounted drive will be shown in your "My computer", with Display Name and drive letter you selected. Now add your confidential data to drive.

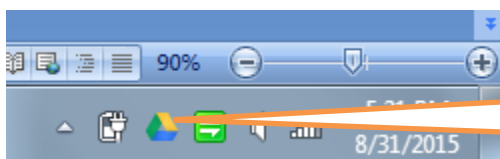
- Similarly you can create two more drives at a time. You can also mount an existing file created previously using same buttons.
- The file you created will mount as a drive and now you can add your confidential data in the drive.
- Share the file between your group members, by external devices, emails, **Google** drive, **iCloud**. The persons which whom you are sharing should have GoSafe Drive dongles with the same key as used by you for encryption or creating file.



Sharing and synchronizing the encrypted file on Google Drive

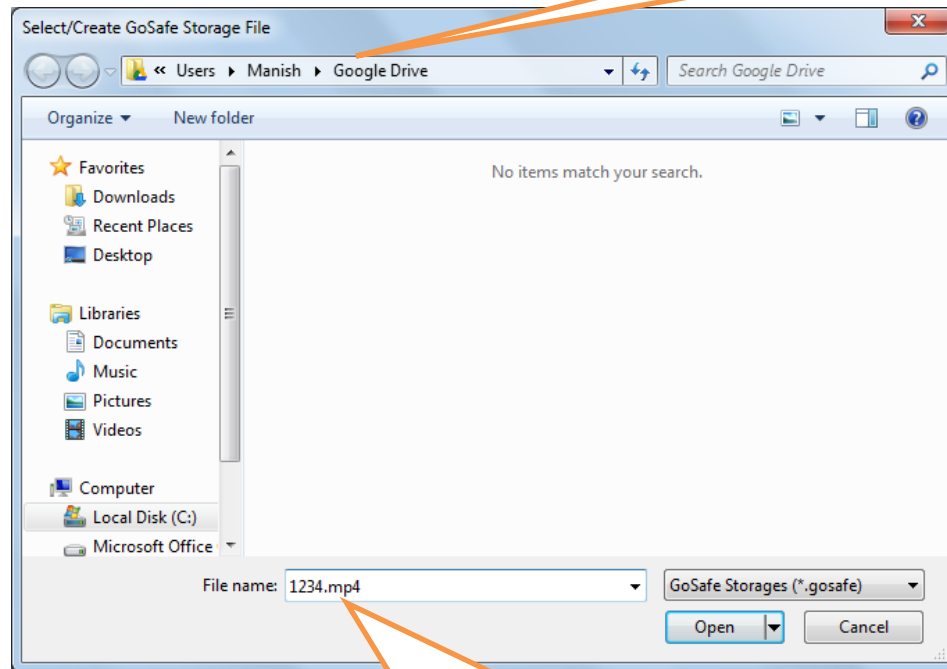


- Download the Google Drive desktop application, from <https://www.google.co.in/drive/download/> and Install.
- Google drive icon will be shown in the taskbar after installation.



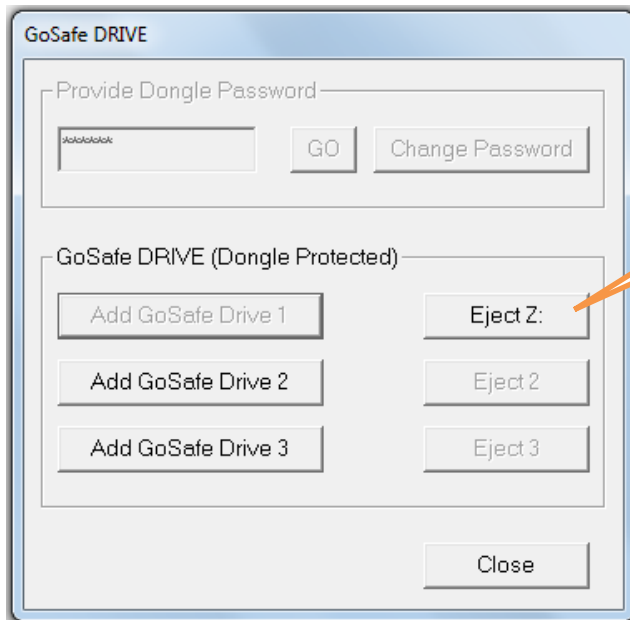
Google Drive icon in the taskbar

Select Google Drive folder while creating the file, which



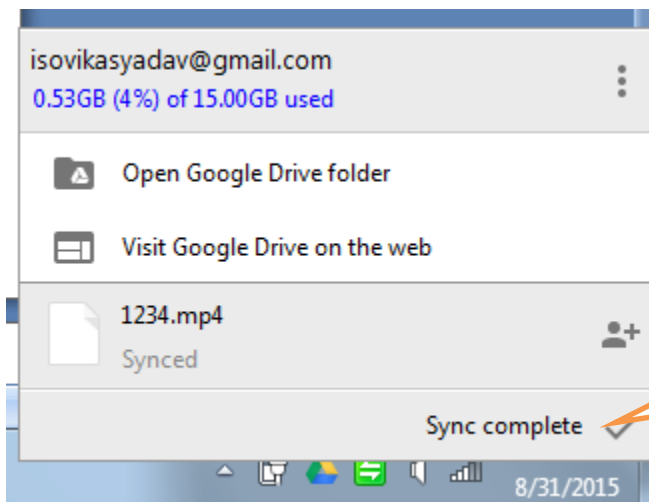
Choose your own format as you like.

- Click on “Open”>>Select “**Group**”>>Enter the “**Display Name**” >> Enter “**Storage Size**” >> “**OK**”.
- Select the drive letter.
- Now the file will mount as a drive in your “**My computer**”. Open the drive and add your confidential data to it. Close the drive as shown below.

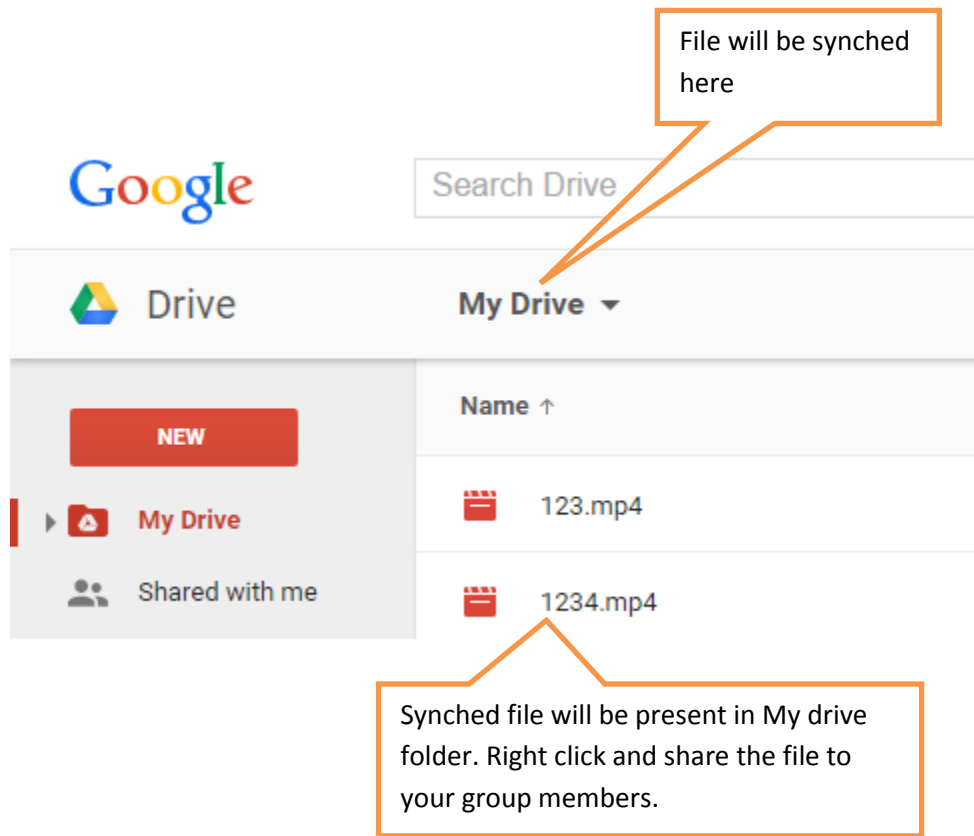


Eject the drive from here and close it

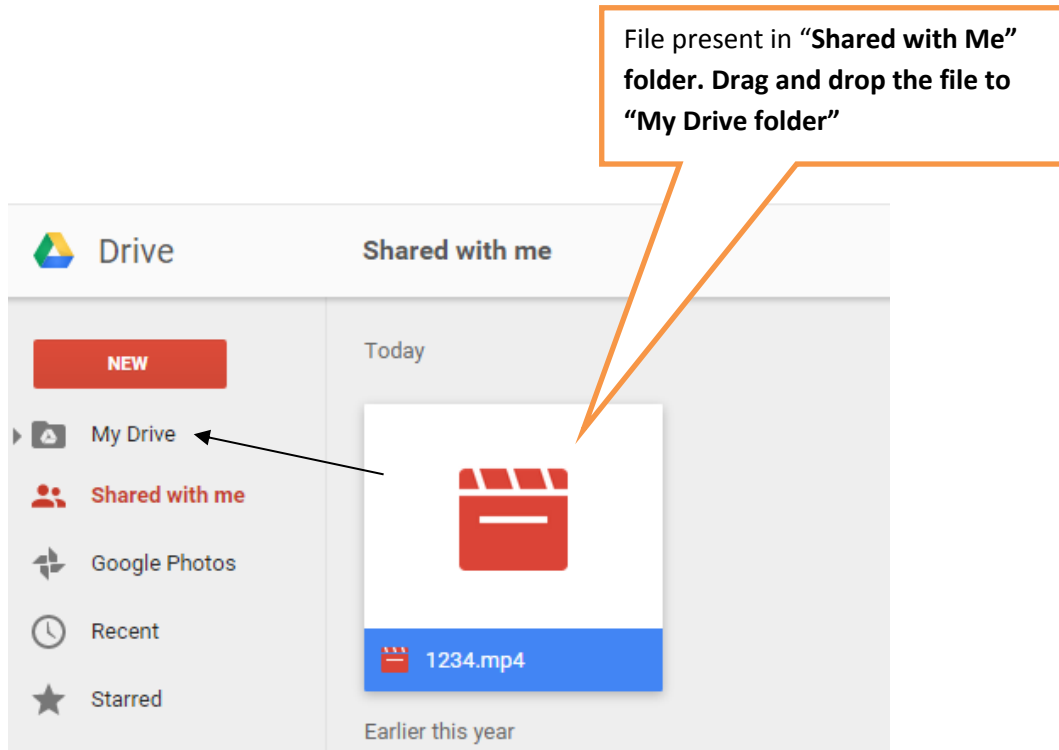
- Once you close the drive, file will be synched to your online Google Drive account in “My Drive” folder automatically, and success message will be displayed in the taskbar.



Success message will be displayed, once the file is synched.



- Share the file to your group members.
- Only **“My Drive”** folder is synced with your desktop so ask your group members to drag and drop the file from **“Shared with me”** folder to **“My Drive”** folder.



- The file will be synced to their desktop in **"Google Drive"** folder in **C:\users\{User Name}\Google Drive**.
- All shared users can mount the file as DRIVE using GoSafe Dongle having same key.