

Quick Solution for File Security

Encryption Guide for Windows

Contact

Developed and Marketed By

Innovative Matrix Softech Pvt. Ltd.

Email: support@isohelpline.com

Web: www.SoftwareFileProtection.com

Add: [7005, 7th Floor, Emerald House,
Sarojini Devi Road, Next to Parklane Hotel, Near State bank of Mysore, Paradise Circle,
Hyderabad / Secunderabad- 500 003 India](#)

For details of  please visit: <http://softwarefileprotection.com/gosafe>

Contents

Contact.....	2
Contents.....	3
License Agreement.....	4
GoSafe File Encryption.....	6
Steps to USE GoSafe File Encryption.....	7
Encryption Keys Customizer	8
GoSafe File Encryptor.....	13

License Agreement

Note: You cannot share the product referred herein. You cannot sale or resale the product referred herein.

IMPORTANT - READ CAREFULLY BEFORE DOWNLOADING, INSTALLING OR COPYING TO YOUR COMPUTER ANY FILE(S) CONTAINED HEREWITH.

THE FILE(S) AND OTHER INFORMATION PROVIDED HEREWITH ARE COPYRIGHTED. BY DOWNLOADING ANY FILE PROVIDED HEREWITH TO YOUR COMPUTER, YOU ARE ACCEPTING AND AGREEING TO THE TERMS OF THIS LICENSE AGREEMENT. IF YOU ARE NOT WILLING TO BE BOUND BY THE TERMS OF THIS LICENSE AGREEMENT, PRIOR TO DOWNLOADING OR COPYING ANY FILE(S) TO YOUR COMPUTER, YOU MUST DECLINE ACCESS TO SUCH MATERIALS.

1. GRANT OF LICENSE: Subject to the provisions contained herein and to the payment of all applicable fees, the Innovative Matrix Softech Private Limited grants you a non-exclusive, non-transferable license to the materials contained herewith (the "Product"). Your licensed rights to the Product are limited to the following:

(a) This License Agreement does not convey to you an interest in or to the Product, but only a limited right of use revocable in accordance with the terms of this License Agreement.

(b) You may install one copy of the Product on, and permit access to it by, a single computer owned, leased or otherwise controlled by you. In the event that computer becomes dysfunctional, such that you are unable to access the Product, you may transfer the Product to another computer, provided that the Product is removed from the computer from which it is transferred and the use of the Product on the replacement computer otherwise complies with the terms of this Agreement. Neither concurrent use on two or more computers nor use in a local area network or other network is permitted. You shall not print, merge, adapt, translate, modify, rent, lease, sell, sublicense, assign or otherwise transfer any of the Product, or remove any proprietary notice or label appearing on any of the Product. You may copy the Product only for backup purposes.

(c) You acknowledge and agree that the Product is proprietary to the Copyright holder, INNOVATIVE MATRIX SOFTECH PRIVATE LIMITED, and is protected under Indian copyright law and international copyright treaties. You further acknowledge and agree that all rights, title and interest in and to the Product, including all intellectual property rights, are and shall remain with Innovative Matrix Softech Private Limited.

(d) You shall provide INNOVATIVE MATRIX SOFTECH PRIVATE LIMITED or any designee of INNOVATIVE MATRIX SOFTECH PRIVATE LIMITED with all information necessary to assure compliance with the terms of this Agreement. In the event you are not in compliance with the terms of this Agreement through the actions of unrelated third parties, you shall use your best efforts to cooperate with INNOVATIVE MATRIX SOFTECH PRIVATE LIMITED and any of its designees to assure compliance.

2. LIMITED WARRANTY:

(a) INNOVATIVE MATRIX SOFTECH PRIVATE LIMITED warrants for your benefit alone that, unless disclosed in the Product to the contrary, INNOVATIVE MATRIX SOFTECH PRIVATE LIMITED can license the Product and all copyright and trademarks related thereto or therein.

(b) THE EXPRESS WARRANTIES SET FORTH IN THIS SECTION 2 CONSTITUTE THE ONLY WARRANTIES WITH RESPECT TO THE PRODUCT AND INNOVATIVE MATRIX SOFTECH PRIVATE LIMITED MAKES NO OTHER REPRESENTATION OR WARRANTY OR CONDITION OF ANY KIND, WHETHER EXPRESS OR IMPLIED (EITHER IN FACT OR BY OPERATION OF LAW) WITH RESPECT TO ANY OF THE PRODUCT, INCLUDING, WITHOUT LIMITATION, WITH RESPECT TO THE SUFFICIENCY, ACCURACY OR UTILIZATION OF, OR ANY INFORMATION OR OPINION CONTAINED OR REFLECTED IN, ANY OF THE PRODUCT. INNOVATIVE MATRIX SOFTECH PRIVATE LIMITED EXPRESSLY DISCLAIMS ALL WARRANTIES OR CONDITIONS OF MERCHANTABILITY OR FITNESS FOR A PARTICULAR PURPOSE. NO OFFICER, DIRECTOR, EMPLOYEE, MEMBER, AGENT, REPRESENTATIVE OR PUBLISHER OF THE COPYRIGHT HOLDER IS AUTHORIZED TO MAKE ANY MODIFICATION, EXTENSION, OR ADDITION TO THIS LIMITED WARRANTY.

3. INDEMNIFICATION: INNOVATIVE MATRIX SOFTECH PRIVATE LIMITED, any agent, representative, publisher or distributor of the Product, or any of their respective directors, officers, employees, agents, representatives or members (the "INNOVATIVE MATRIX SOFTECH PRIVATE LIMITED Indemnified Parties") shall have no liability for, and you shall defend, indemnify and hold each of the INNOVATIVE MATRIX SOFTECH PRIVATE LIMITED Indemnified Parties harmless from and against, any claim, loss, demand, liability, obligation and expenses (including reasonable attorneys' fees) based upon or arising out of any injury or damage, or any product liability claim, including but not limited to, any personal or bodily injury or property damage, arising out of, pertaining to, or resulting in any way from, the use or possession of any of the Product by you and/or any of your directors, officers, employees, representatives, agents or contractors.

4. LIMITATION OF LIABILITY:

(a) You acknowledge that each of INNOVATIVE MATRIX SOFTECH PRIVATE LIMITED's obligations and liabilities with respect to the Product are exhaustively defined in this Agreement. You are responsible for the consequences of any use of any of the Product (whether or not such use was consistent with the license granted hereunder) created therefrom. Whether or not INNOVATIVE MATRIX SOFTECH PRIVATE LIMITED has been advised of their possibility, neither INNOVATIVE MATRIX SOFTECH PRIVATE LIMITED nor any of its representatives or agents, directors, officers, employees, or members, shall be liable, whether under contract, tort (including negligence) or otherwise, for any indirect, special, punitive, incidental or consequential loss, damage, cost or expense of any kind whatsoever and howsoever caused, that may be suffered by you or any of your directors, officers, employees, agents, representatives or contractors or any third party.

(b) If at any time an allegation of infringement of any rights of any third party is made, or in INNOVATIVE MATRIX SOFTECH PRIVATE LIMITED's opinion is likely to be made, with respect to any of the Product, INNOVATIVE MATRIX SOFTECH PRIVATE LIMITED may, at its option and at its own expense (i) obtain for you the right to continue using the Product, (ii) modify or replace the Product or any portion thereof so as to avoid any such claim of infringements, or (iii) refund to you the License Fee. INNOVATIVE MATRIX SOFTECH PRIVATE LIMITED shall have no liability to you if any claim of infringement would have been avoided except for your refusal to use any modified or replacement Product supplied or offered to be supplied pursuant to this Section 4(b) or to otherwise cease using the Product. Notwithstanding anything contained in this Agreement, and except as set forth in Section 4(b) hereof, INNOVATIVE MATRIX SOFTECH PRIVATE LIMITED's liability to you for damages pursuant to this Section 4(b), if any, shall not exceed the amounts of the License Fee paid by you for the Product subject to any such claim.

(c) Section 4(b) state the entire liability of INNOVATIVE MATRIX SOFTECH PRIVATE LIMITED with respect to the infringement or alleged infringement of any third party rights of any kind whatsoever by any of the Product.

5. TERMINATION: This Agreement may be terminated immediately by INNOVATIVE MATRIX SOFTECH PRIVATE LIMITED upon breach of any provision of this Agreement by you. Upon any termination of this Agreement, you shall immediately discontinue the use of the Product and shall within ten (10) days either return file(s) on diskette(s), if any,

to INNOVATIVE MATRIX SOFTECH PRIVATE LIMITED or certify in writing to INNOVATIVE MATRIX SOFTECH PRIVATE LIMITED that the Product has been deleted from your computer and is eliminated from your premises.

6. GOVERNING LAW; ATTORNEY'S FEES: This Agreement shall be governed by the laws of the Republic of India without reference to its conflict of laws and provisions and you further consent to jurisdiction by the state and federal courts sitting in the state of Andhra Pradesh, India.

7. MISCELLANEOUS: This Agreement constitutes the complete and exclusive agreement between INNOVATIVE MATRIX SOFTECH PRIVATE LIMITED and you with respect to the subject matter hereof, and supersedes all prior oral or written understandings, communications or agreements not specifically incorporated herein. This Agreement may not be modified except in writing duly signed by an authorized representative of INNOVATIVE MATRIX SOFTECH PRIVATE LIMITED and you. If any provision of this Agreement is held to be unenforceable for any reason, such provision shall be reformed only to the extent necessary to make it enforceable, and such decision shall not affect the enforceability (i) of such provision under other circumstances, or (ii) of the remaining provisions hereof under all circumstances. Headings shall not be considered in interpreting the Agreement.

8. EXPORT: You cannot load or export or re-export any of the Product or any underlying information or technology without prior consent from the Innovative Matrix Softech Private Limited. You may not load or export or re-export any of the Product or any underlying information or technology except in full compliance with all applicable laws of republic of India and other applicable laws and regulations.

9. By agreeing to this license agreement, you also agree to general terms and conditions given on our website www.isohelpline.com (either on home page or product related pages)

BY ACCESSING THE PRODUCT, YOU ACKNOWLEDGE THAT YOU HAVE READ THE TERMS OF THIS LICENSE AGREEMENT AND AGREE TO BE BOUND BY ITS TERMS.

GoSafe Encryption

New GoSafe File Encryption uses very strong AES 256 encryption mechanism. The encryption keys are stored in the dongle which can be customized by the user.

Dongles are additionally password protected to eliminate misuse when lost.

You can use GoSafe Key Customization Tool to customize encryption keys and make as many user groups as you want having common encryption keys.

Each dongle supports two encryption keys. You should customise keys as you like.

Steps to Use GoSafe File Encryption

- First step is to Install the software and Encryption Driver.
- Second step is to set the dongle password. Use GoSafe key Customiser to set the password.
- Customise Key 1 and Key 2. Use GoSafe key Customiser to set keys.
- Make sure you save these keys in a safe place. You can use GoSafe DRIVE free edition to keep keys file in a safe place.
- Now you can use New GoSafe File Encryptor (AES 256).

Notes:

You can change keys any number of times (about 1000 times) but please note that once you change the keys, files encrypted with previous keys will not open.

It is strictly recommended that you should not change keys because AES 256 encrypted file can not be reversed and you will lose data/files.

Encryption Keys Customizer

First Step is to set GoSafe Dongle password.

GoSafe Key Customizer

Dongle Authentication

Dongle Password GO Set Password Reset Password Help!

Customize Security Keys

KEY 1

KEY 2

Save Keys in File Load Keys from File Save Keys in GoSafe Dongle

GoSafe Key Verify Status :


Note: You need to restart application after setting password.

Enter Dongle password and Click "Go"

You can change password anytime.

GoSafe Key Customizer

Dongle Authentication

Dongle Password 

Customize Security Keys

KEY 1

KEY 2

GoSafe Key Verify Status :

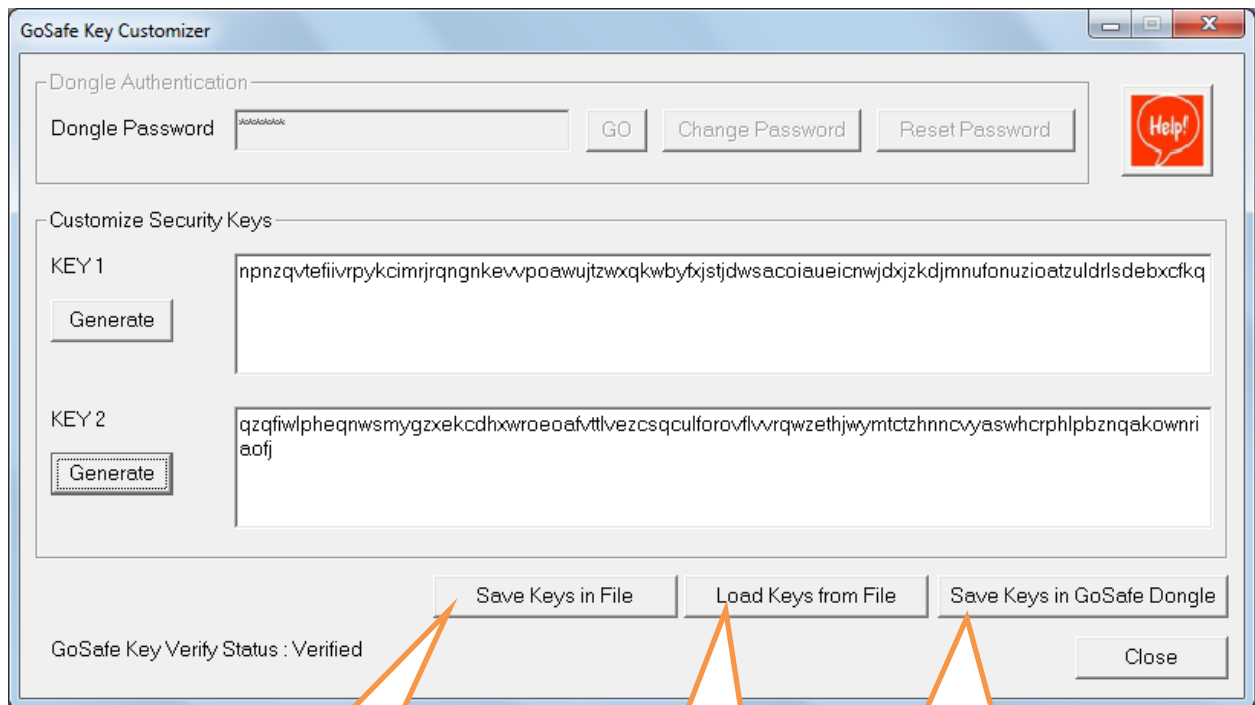
Generate Key 1.

You can type also but auto generation is preferred to ensure uniqueness.

Generate Key 2.

You can type also but auto generation is preferred to ensure uniqueness.

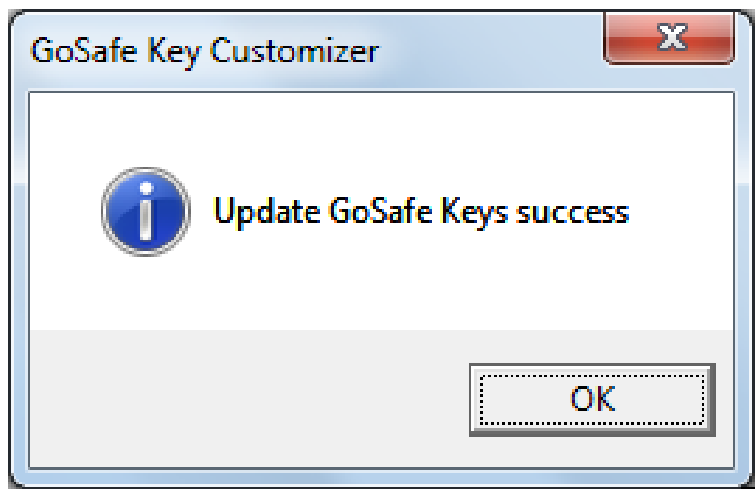
The screenshot shows the GoSafe Key software interface. At the top, there is a section for 'Dongle Authentication' with a 'Dongle ID' field containing '1010101010', a 'GO' button, a 'Password' field, and a 'Reset Password' button. A 'Help!' icon is located to the right. Below this is the 'Custom Security Keys' section, which contains two rows. The first row is labeled 'KEY 1' and has a 'Generate' button to its left. The second row is labeled 'KEY 2' and also has a 'Generate' button to its left. At the bottom of the window, there are three buttons: 'Save Keys in File', 'Load Keys from File', and 'Save Keys in GoSafe Dongle'. The status bar at the very bottom indicates 'GoSafe Key Verify Status : Verified' and a 'Close' button.



SAVE the keys for future use.

Load the previously SAVED keys.

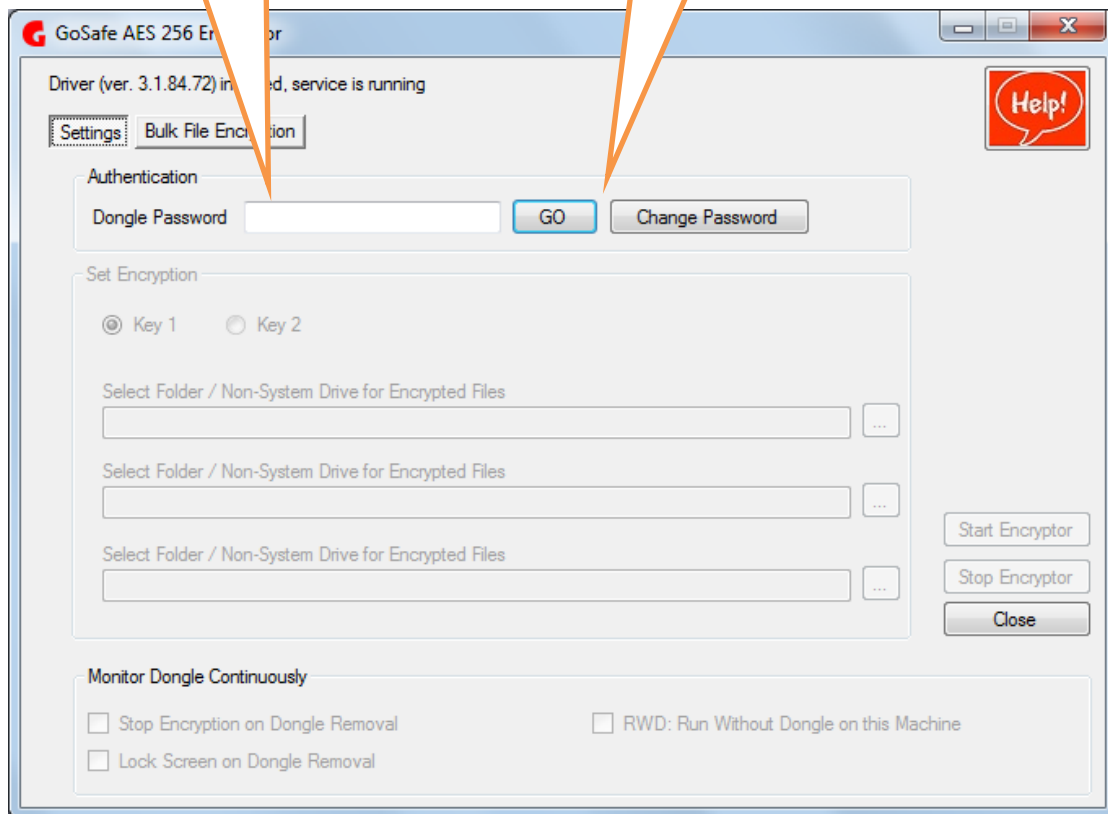
UPDATE new keys in the DONGLE.



GoSafe File Encryptor

Enter Dongle password and Click "Go"

You can change password anytime.

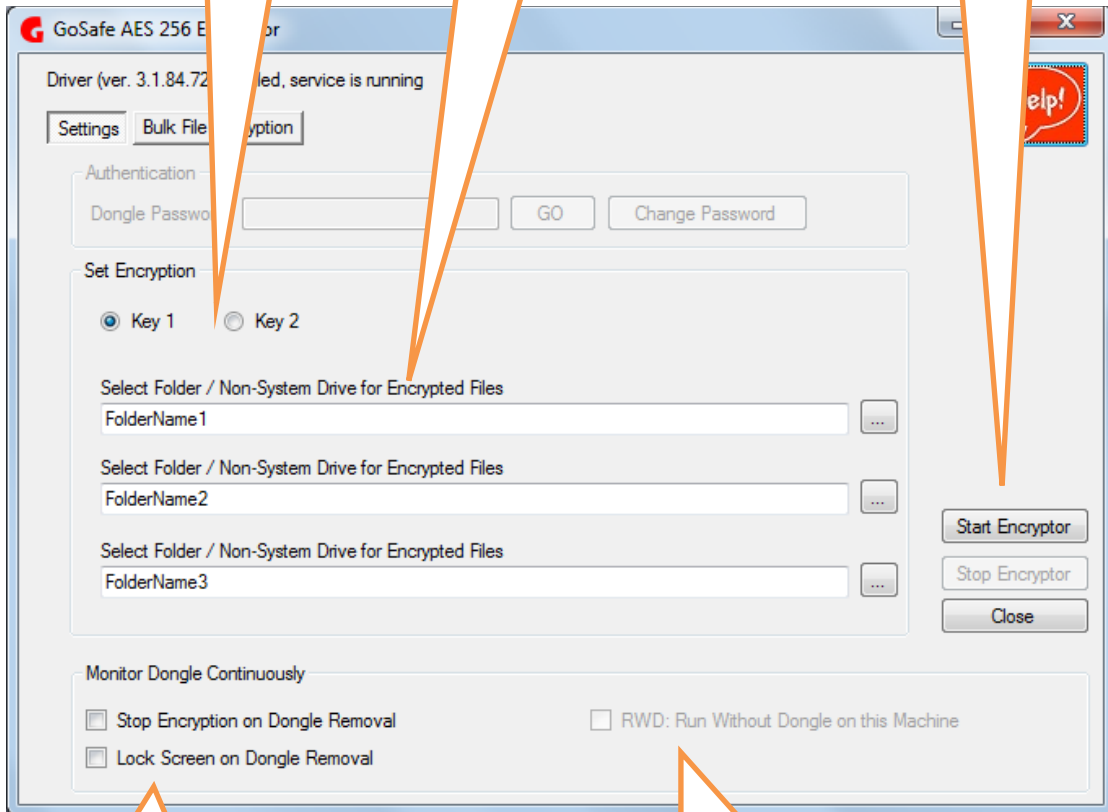


On Password Success all options will be available.

Select Encryption Key

Select Folder to save encrypted file.

Start Encryptor.



These two options can be used to set software behavior when dongle is removed.

RWD: This option will be available only after starting Encryptor.

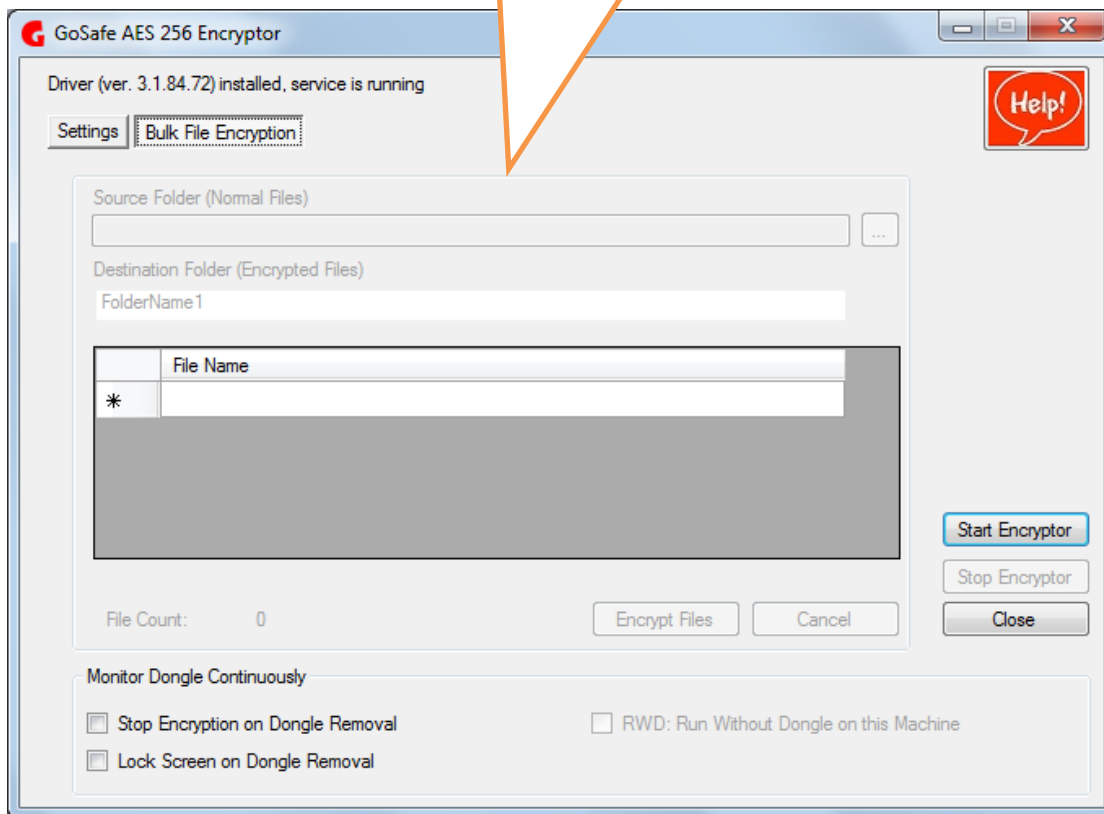
If for some reason you want to run this program without dongle, tick this and software will run without Dongle on current machine only.

Make sure you switch to dongle mode if you move in un-secured locations.

Note:

- **Once Encryptor is ON, any file copied or saved to selected folder will be encrypted.**
- **Once Encryptor is OFF, any file copied or saved to selected folder will be normal.**
- **Encrypted files will open like normal files when encryptor is ON.**
- **When Encryptor is OFF, files will remain AES 256 encrypted.**

Bulk File Copier can be used to Encrypt files in bulk by selecting folder containing normal files. They will get copied to Encryption folder and will get encrypted.



Note:

When GoSafe Login Credential is used, it installs an Auto Log Out Service. If GoSafe File Encryptor is used you should uninstall "Auto Log Out Service" or delete it from "Start Up" folder.